

## Newsletter Number 13 – October 2019

Welcome to our 13<sup>th</sup> newsletter from Dyer & Butler which aims to provide up to date information on the construction phase of the Valley Gardens Improvement Scheme. Further information on the scheme and future plans for the Valley Gardens area can be found at: <https://www.brighton-hove.gov.uk/valleygardens>

### Progress since last month

The last month has seen fundamental changes to the traffic movements through the scheme works area with northbound through traffic moved on to the eastern side of Valley Gardens alongside the southbound through traffic. This has afforded Dyer & Butler a greatly increased works area on the west side of York Place, St Georges Place and Gloucester Place. To make the best use of this opportunity we have engaged additional work force.

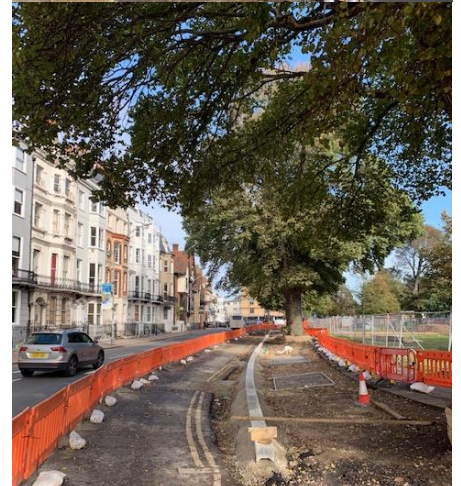
Whilst doing so we have ensured that local traffic including residents, business deliveries, refuse collections as well as bus traffic has been maintained in these areas and we have welcomed the feedback received from highway users which has helped us improve the temporary traffic management layouts.

Managing people and traffic using the space while we are working on the scheme is challenging but we are keen to hear how we can make improvements such as the installation of a temporary barriered northbound pedestrian route from the existing York Place bus stops to Trafalgar Street and on to Brighton railway station. This was suggested by local users.

Work being carried out in the York, St Georges and Gloucester Place areas include constructing a new footway, laying new kerb and putting in channel lines. On the eastern side of Marlborough Place we are installing a new footway that will join up pedestrian access in to Grand Parade. Once this is completed the new cycle lane here can also be opened to traffic. We are providing new tree surrounds to replace old and failing planters.

We appreciate the current phase of works are affecting all of Valley Gardens and will result in changes in behaviour for all traffic using the area but we hope you appreciate our efforts to minimise the impact on everyone and can assure you we intend to carry out the current works as speedily as possible.

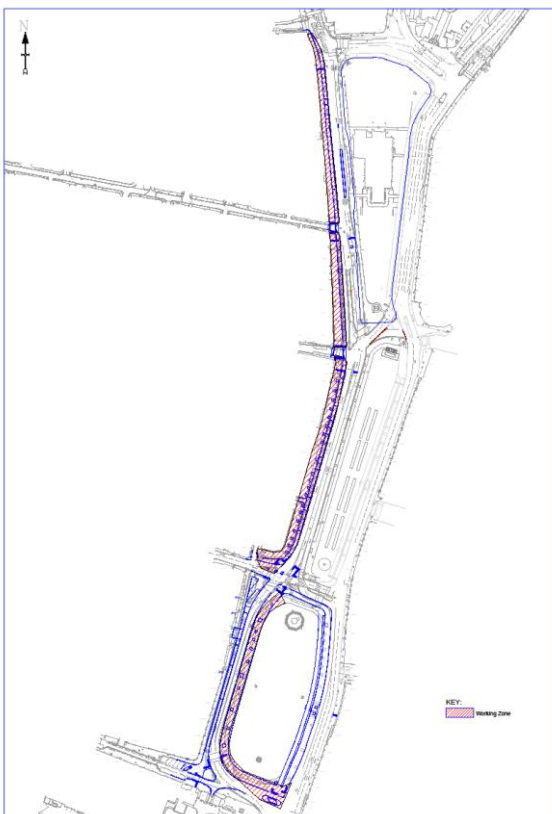
Landscaping the gardens continues with contractors breaking up the soil in dedicated root protection areas and finalising edging to the internal paths.



## Planned works for this month

- Removal of North Road pedestrian island to allow traffic to use the two available eastbound lanes and reduce traffic queues in North Road.
- We have increased the number of teams on site to progress large areas of new footway paving works in York, St Georges and Gloucester Place to ensure the works are completed quickly and efficiently.
- Moving the cycle lane in Marlborough Place to a two-way contraflow in lane one of Marlborough Place with pedestrians using the western footway. The eastern footway will be closed to enable its reconstruction and the pedestrian crossing at the junction of Church Street will be temporarily closed.
- Whilst the eastern footway of Marlborough Place is closed, we will take the opportunity to rebuild the pedestrian crossing in this location and once the footway works are completed the crossing will be reopened.
- Landscaping works will continue in Victoria Gardens South and footway edging work will commence in Victoria Gardens North.

## Works location drawing



## Contact us

Please contact Tess Elliott, Communications Officer, if you have any queries concerning the works being carried out. We are always here to listen and resolve any issues as soon as possible.

- By Phone: 07478 911865
- By Email: [comms.valleygardens@dyerandbutler.co.uk](mailto:comms.valleygardens@dyerandbutler.co.uk)
- Site offices located just South of St Peter's Church, Valley Gardens, Brighton.

If Tess is unavailable, please contact Dyer & Butler Ltd on 023 8074 2222

Please contact us if you wish to unsubscribe to this newsletter.