

1 April 2010

Mr Martin Randall
City Planner
Brighton & Hove City Council
Room 407-410
Hove Town Hall
Norton Road
Hove
BN3 3BQ

Dear Mr Randall

OPEN SPACE, SPORT AND RECREATION STUDY REPORT – BRIGHTON & HOVE

It has come to our attention that Figure 8.2 of the above report is incorrect. A revised map which provides the correct information has been attached. Section 8 has been reviewed to ensure it is based on the correct information. Paragraphs 8.1 and 8.2 clearly show the basis on which this section and standards were prepared – they accord with Appendix G and based on the correct map. Thus the analysis and conclusions in the report regarding NSN are still accurate and do not need change. However minor points of clarity have been noted and some minor corrections have been made to the following paragraphs:

Paragraph 8.19 – to avoid confusion in the reading of this paragraph the last sentence should be moved and placed in front of the penultimate sentence to read as follows:

“When the quantity standard is applied across the city it clearly demonstrates that no surpluses currently exist. Indeed, in view of the demand for many of the types of open space, it is debatable whether the recommended standards are somewhat low. However the approach taken endeavours to balance the demand with the challenges in delivering new space. As the population increases in future in line with projections, the city will have an overall shortfall in NSN green space if new provision is not made. In order to identify geographical areas and those areas with significant local needs, the recommended accessibility standard has been applied and mapped. This is shown in Figure 8.2 overleaf. However, it should be noted that in a high density city like Brighton & Hove the

mapping of the quantity standard, where the site size and surrounding population is taken into account, is likely to highlight further deficiencies.”

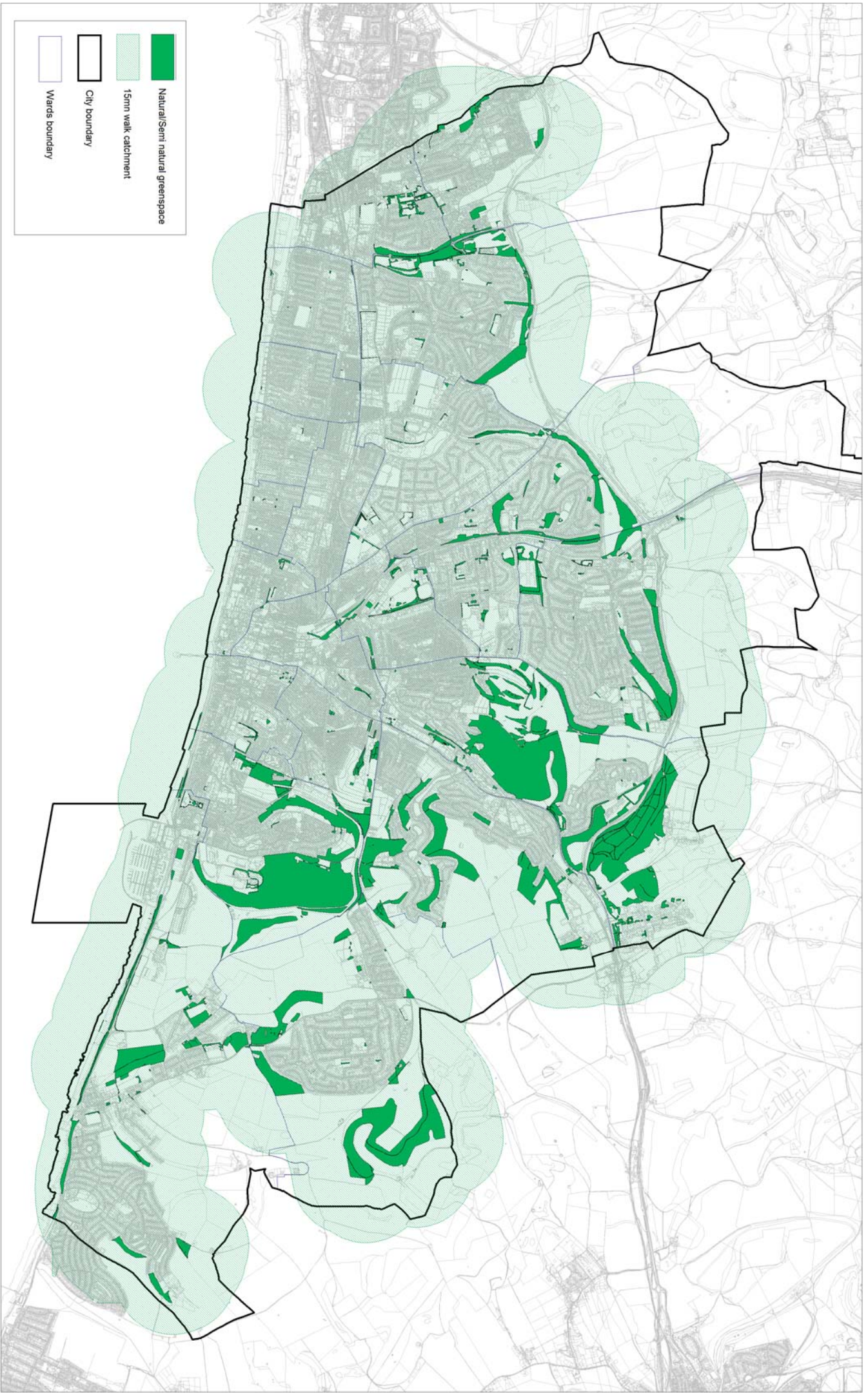
Paragraph 8.23 - the projected increase in population should read: 17%

Figure 8.3 – Whilst this figure is an enlargement of the incorrect figure 8.2, the mapped data for central Hove is in general correct. The analysis and assessment detailed in paragraphs 8.35 to 8.39 stand true.

Yours sincerely

A handwritten signature in black ink, appearing to read 'Marcus Kingwell', written in a cursive style.

Marcus Kingwell
Director of Consulting



Natural/semi natural greenspace