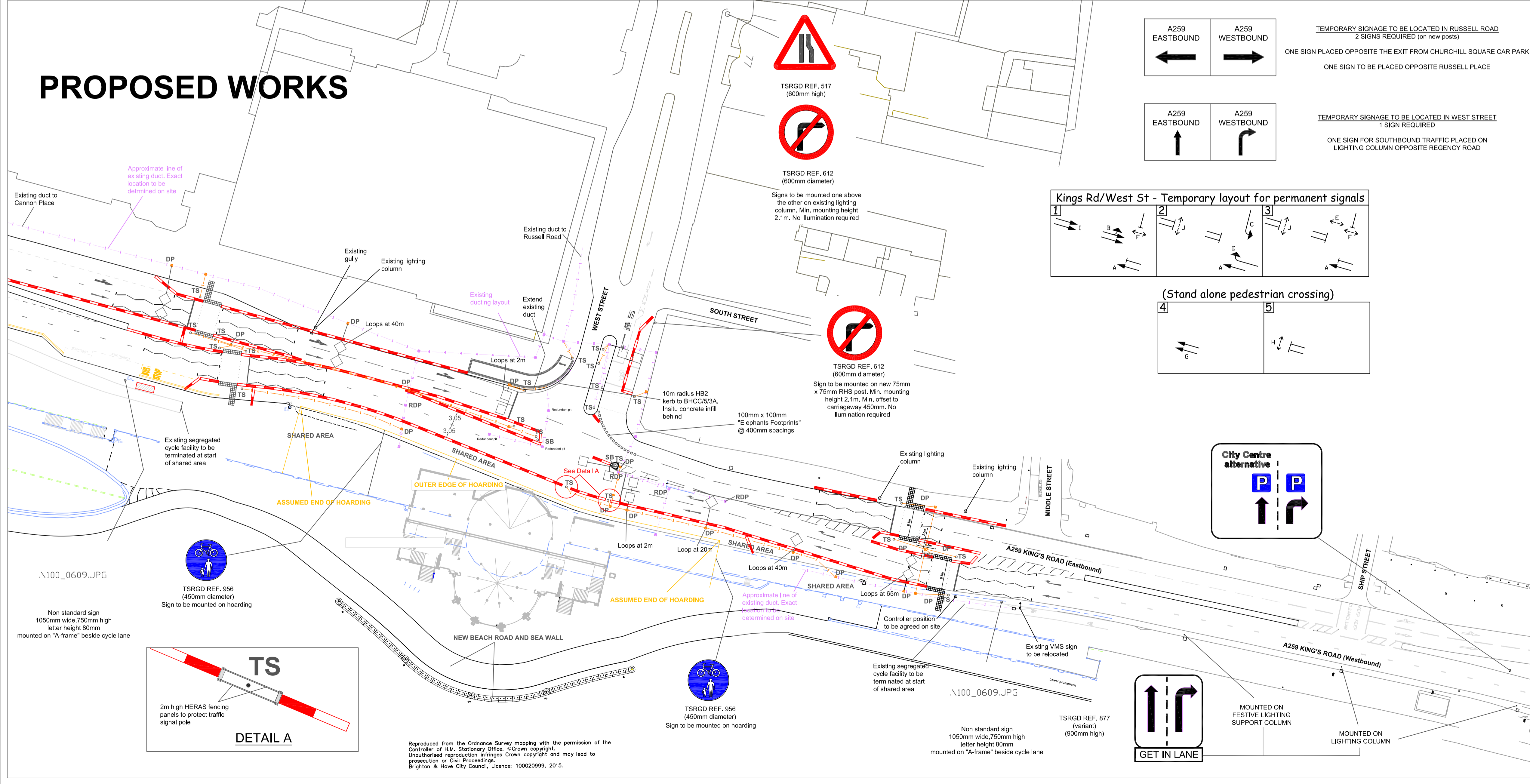


WORKS TO EXISTING



PROPOSED WORKS

NOTES

- All dimensions are in millimetres unless stated otherwise.
- All levels in metres above Ordnance Datum (Newlyn).
- Do not scale from this drawing.

PROPOSED ROAD MARKINGS:

STOP LINES	TSRGR REF.	1002.1
WARNING LINES ON APPROACH TO STOP LINES	TSRGR REF.	1004
LANE ARROWS	TSRGR REF.	1038 (4 metre length)
1st arrow	15m from stop line	
2nd arrow	45m from stop line	
3rd arrow	75m from stop line	
CROSSING STUDS	TSRGR REF.	1055.1
GHOST ISLAND HATCHING EAST OF THE JUNCTION	TSRGR REF.	1042
TURN LEFT WORDING	TSRGR REF.	1036.1 (4 metre length) (1.6m letters)

Legend:

- TS_o New traffic signal pole retention socket to BHCC/8/6. Signal pole supplied by others
- DP_o New 450x450 STAKKAbox drawpit to BHCC/8/2B located on existing duct run
- RDP_o Replace existing footway drawpit with new 450x450 STAKKAbox drawpit to BHCC/8/2B with D400 cover to suit new carriageway level
- New traffic signal duct to BHCC/8/8B (with number of ducts). Reinstatement to match existing footway/carriageway
- - - Existing traffic signal duct (with number of ducts)
- ◇ Proposed traffic signal loop (to be installed by others)
- 500mm wide water filled traffic management barriers with mesh fencing on top
- SB_o White "Solaboll" bollard with "Keep Left" arrow

Rev	Revision details	Date
1	Signed	January 2016
2	Drawn: P. OSBORNE	January 2016
3	Surveyed: AMEY	December 2014
4	Checked:	
5	Approved:	
File/Acad ref: S:\		

Brighton & Hove City Council

Project Name
SHELTER HALL
KINGS ROAD
BRIGHTON

Drawing Title
TEMPORARY
TRAFFIC MANAGEMENT
DETAIL DESIGN

Drawing No 010	Scale 1:500 @ A1	Rev
--------------------------	----------------------------	------------

Reproduced from the Ordnance Survey mapping with the permission of the Controller of H.M. Stationary Office. © Crown copyright. Unauthorised reproduction infringes Crown copyright and may lead to prosecution or Civil Proceedings. Brighton & Hove City Council. Licence: 100020999, 2015.