

Brighton & Hove: 2021 Census briefing

2021 Census briefing City profile



277,103 people

Usual resident population



121,401 homes

Households with at least one resident



Communal establishments

One in 33 Brighton & Hove residents (3.1%, 8,505 people) live in a communal establishment



Population density

Some of Brighton & Hove neighbourhoods are the most densely populated in England



Household composition

More than a third of households (35%, 42,101 homes) in the city are single person households



Housing tenure

Nearly a third of households (33%, 39,684 households) in the city rent privately



Accommodation type

A fifth of households (20%, 23,803 households) live in a flat or bedsit in a converted or shared house



International migrants (country of birth)

The city's international migrant population has increased by 27% or 11,500 people since the 2011 Census



Ethnicity

The number of Black and Racially Minoritised residents has increased by 35% or 18,921 people since the 2011 Census



A person's first or preferred language

For 24,579 residents (9%) English is not their first or preferred language.



Gender identity

At least 2,341 residents (1.0%) identify with a gender different from their sex identified at birth.



Sexual orientation

More than one in ten residents aged 16 or over (10.6%, 25,375 people) identify with an LGB+ sexual orientation.



Long term health condition & disability

Nearly one in five residents, (19%, 51,797 people) are disabled as defined by the Equalities Act



Provision of unpaid care

Nearly one in 25 residents (4%, 9,470 people) provide 20 or more hours of unpaid care



Access to range of data from Census 2021, including local data at different geographical levels, maps and 2011 census data is available locally on [Community Insight](#) and nationally at [Census 2021](#)

Usual resident population



277,103 people

Usual resident population



121,401 homes

Households with at least one resident

Usual resident:

A usual resident is anyone who on Census Day, 21 March 2021 was in the UK and had stayed or intended to stay in the UK for a period of 12 months or more, or had a permanent UK address and was outside the UK and intended to be outside the UK for less than 12 months.

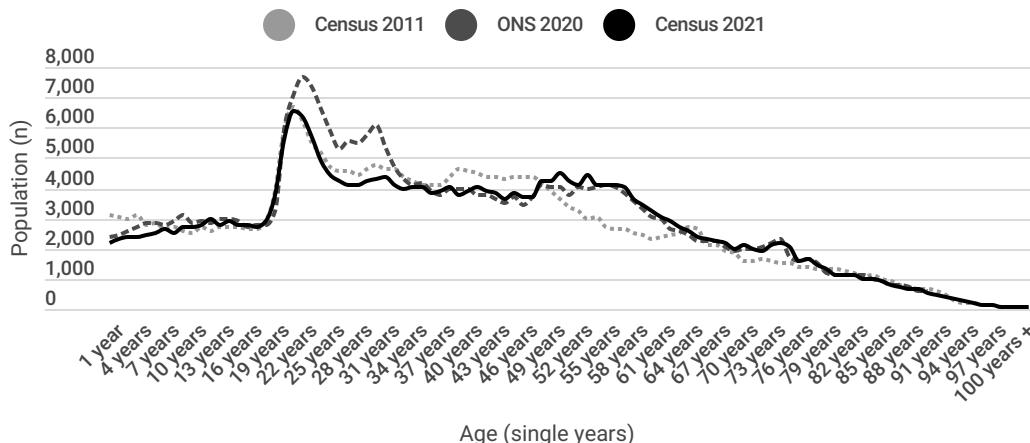
A household is:

- one person living alone: or
- a group of people (not necessarily related) living at same address who share cooking facilities and share a living room or sitting room or dining area.

A household must have at least one usual resident at the address. A group of short-term residents living together or a group of visitors staying at an address is not classified as a household.

Brighton & Hove's population and the number of households in the city are different to what might have been expected based on our pre 2021 Census best estimates for the city, the Office for National Statistics (ONS) 2020 Mid-Year Population Estimates. Brighton & Hove usual resident population (277,103 people) is 1.4% (3,734 people) higher than seen in the 2011 Census (273,369) but 5.0%, (14,635 people) lower than seen in the 2020 ONS Mid-Year Population Estimates (291,738 people). The number of households in the city (121,401) is 139 fewer than seen in the 2011 census (121,540).

Chart 1: Brighton & Hove usual resident population: 2011 Census, 2020 ONS Mid-Year Estimates and 2021 Census.



Download data

Brighton & Hove's population changes are not evenly distributed across all age groups (chart 1)

Difference between 2021 Census and 2020 Mid-Year Estimates.

In the 2021 Census there are...



- Fewer children aged 0 to 10 years old, a decrease of 9% (2,805 people)
- Fewer adults aged 21 to 32 years old, a decrease of 22% (15,253 people)



- More adults aged 49 to 52 years old, an increase of 9% (1,353 people)

Difference between 2021 Census and 2011 Census.

In the 2021 Census there are...

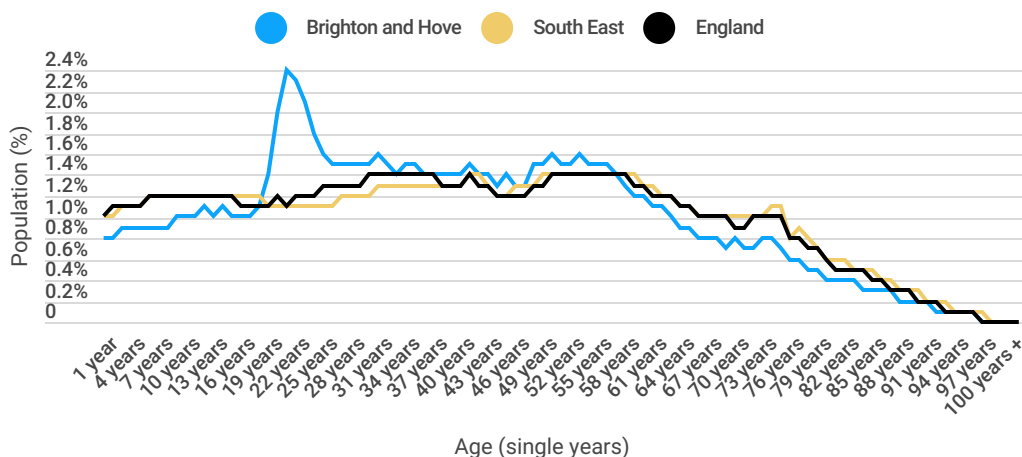


- Fewer children aged 0 to 7 years old, a decrease of 16% (3,826 people)
- Fewer adults aged 23 to 46 years old, a decrease of 10% (10,284 people)



- More adults aged 48 to 62 years old, an increase of 32% (13,826 people)
- More adults aged 65 to 77 years old, an increase of 20% (4,341 people)

Chart 2: Usual resident population, 2021 Census



 [Download data](#)

Brighton & Hove has a different population profile compared to the South East and England (chart 2)



Brighton & Hove has a much higher proportion of people aged 18 to 34 years old (28%, 78,759 people) compared to only 20% in the South East and 22% in England.



Brighton & Hove has a lower proportion of children aged 0 to 15 years old (15%, 41,735 people) compared to 19% in both the South East and England.

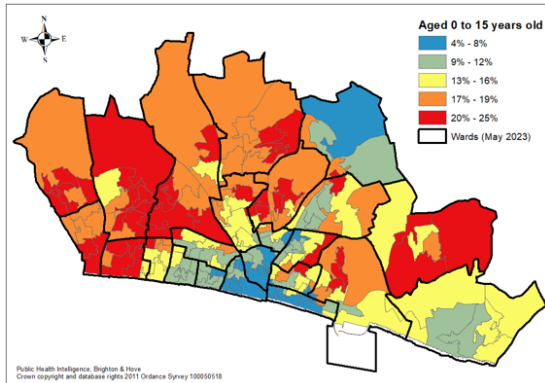


Brighton & Hove has a lower proportion of people age of 57 to 87 years old. In Brighton & Hove just over one in five of the total population (22%, 59,583 people) is aged 57 to 87 years old compared to 28% in the South East and 27% in England.



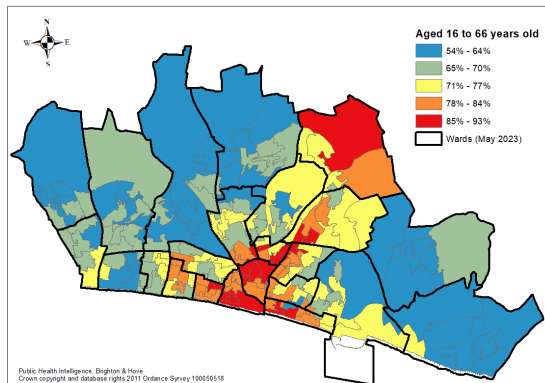
Brighton & Hove population distribution by key age groups, 2021 Census

Map 1: Brighton & Hove residents aged 0 to 15 years old



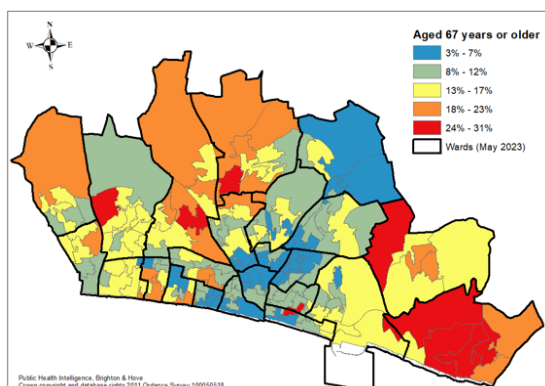
Children aged 0-15 years old are concentrated towards the west and north of the city with comparatively fewer children in the central and coastal areas of the city (map 1). The highest proportions of children aged 0-15 years old live in areas of Whitehawk (25%) and in the areas north of Portland Road on the border of Wish and Westbourne & Poets' Corner wards (25%). To the east of the city there are also significant concentrations of children in some Woodingdean neighbourhoods.

Map 2: Brighton & Hove residents aged 16 to 66 years old



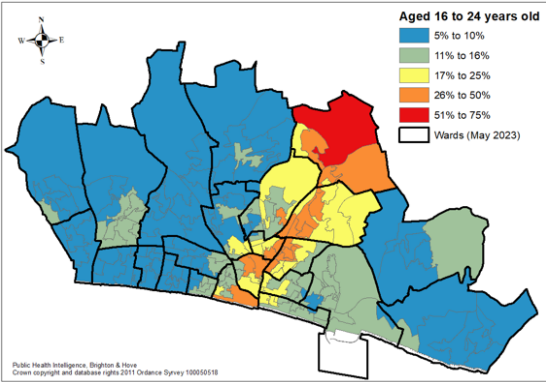
Working age residents (aged 16 – 66 years old) are most concentrated in central wards either side of the Lewes Road and along the central coastal strip (map 2). There are proportionally fewer adults of working age in the wards to the east and west. There are three neighbourhoods in the city where more than 90% of residents are of working age: at Falmer, around Lewes Road between the Level and the gyratory, and in Kemptown ward. Other neighbourhood such as Hangleton, Eastern Road and east of Hove Park have less than 60% of residents of working age.

Map 3: Brighton & Hove residents aged 67 years old and older



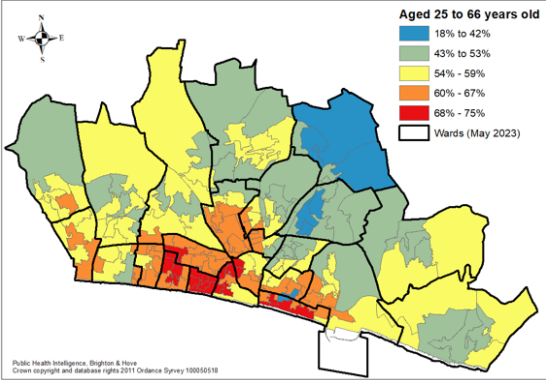
Older people (67 years and older) in Brighton & Hove tend to live to the north and east of the city (map 3). The highest proportions of older residents live in locations in Hangleton (31%), Rottingdean & West Saltdean ward (30%) and Eastern Road (30%). This is in contrast to locations around Brighton station, Falmer and Lewes Road where less than 3% of residents are aged 67 or older.

Map 4: Brighton & Hove residents aged 16 to 24 years old



The concentration of working age adults along the Lewes Road is most notable in adults aged 16 to 24 (map 4). For a half of neighbourhoods in the city (81 LSOAs, 49%) 10% or fewer residents are aged 16 to 24 years old. This is in contrast to 12 neighbourhoods where more than a third of residents are aged 16 to 24 years old. The highest concentration of 16 to 24 year olds live in Falmer/Coldean (75%), Falmer/north Moulsecoomb (50%) and around Lewes Road/Upper Lewes Road (47%). The lowest proportions live north of Hove station (6%) and along the Kingsway in Hove; Grand Avenue (5%) and west of Hove Street (6%).

Map 5: Brighton & Hove residents aged 25 to 66 years old



Meanwhile working age adults over the age of 24 years old are concentrated in central coastal areas of the city and in central Hove (map 5). The highest proportions of 25 to 66 year olds live south of Hove station (75%), Seven Dials (74%), Kemptown (74%), north side of Western Road (74%) and Albany Villas (74%). This is in contrast to Falmer (18%), north Moulsecoomb (34%), Coldean (34%) and south Moulsecoomb (35%).



Communal establishments

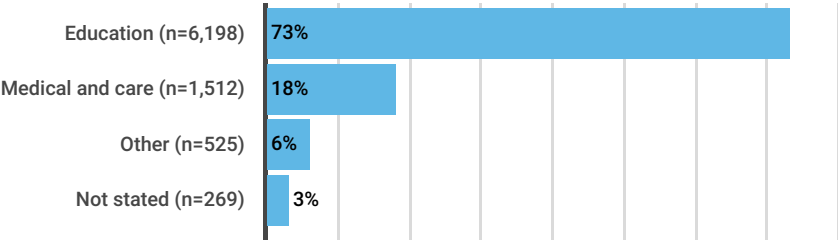
A high proportion of Brighton & Hove residents live in a communal establishment (table 1). One in 33 Brighton & Hove resident (3.1%, 8,505 people) live in a communal establishment, this is significantly higher than seen in both the South East (2.0%) and England (1.7%).

Table 1: Usual residents living in communal establishments, 2021 Census

	Brighton & Hove (n)	Brighton & Hove (%)	South East (%)	England (%)
All usual residents	277,103	100.0%		
Lives in a household	268,598	96.9%	98.0%	98.3%
Lives in a communal establishment	8,505	3.1%	2.0%	1.7%

Definition of communal establishment

Chart 3: Usual residents living in communal establishments by management type, 2021 Census



The majority of residents living in a communal establishment are students (chart 3). Nearly three quarters of residents living in a communal establishment (73%, 6,198 people) live in an education establishment. Nearly a fifth (18%, 1,512 people) live in a medical or care establishment.



Households with at least one resident

Brighton & Hove has 121,401 households with at least one resident (table 2), a decrease of 139 households (0.1%) compared to the 2011 Census. Meanwhile, the number of residents living in households (268,598 people) has increase by 1.0%, resulting in an increase in the average household size from 2.18 in 2011 to 2.21 in 2021. The average household size in Brighton & Hove is still smaller than seen in both the South East (2.39) and England (2.37) and is the smallest among all upper tier local authorities in the South East.

Table 2: Average household size

	2021 Census: Brighton & Hove	2021 Census: South East	2021 Census: England	2011 Census: Brighton & Hove
Households with at least one resident	121,401	3,807,967	23,436,086	121,540
Average household size	2.21	2.39	2.37	2.18

More than a third of households (35%, 42,101 homes) in Brighton & Hove are single person households (table 3), higher than seen in the South East (28%) and England (30%). A third of single person households (13,875 homes) and one in ten of all households (11%) are households with a single person aged 66 or older living there, this is also higher than seen in the South East (13%) and England (13%). Compared to the 2011 Census, there are fewer one person household (5%, 2,193 homes) overall and those with a resident aged 66 or older (4%, 593 homes).

Nearly a quarter of households (24%, 28,687 homes) contains a dependent child aged under 16, lower than seen in the South East (29%) and England (28%). However, we have a similar proportion on lone parent households (6%, 7,229 homes) as the South East (6%) and England (7%). Compared to the 2011 Census, the number of lone parent families has fallen by 16% (1,408 homes).

Table 3: Household type

	2021 Census: Brighton & Hove (n)	2021 Census: Brighton & Hove (%)	2021 Census: South East (%)	2021 Census: England (%)	2011 Census: Brighton & Hove (n)	2011 Census: Brighton & Hove (%)	Change: Brighton & Hove (n)	Change: Brighton & Hove (%)
One person household	42,101	35%	28%	30%	44,294	36%	-2,193	-5%
- Aged 66 years and over	13,875	11%	13%	13%	14,468	12%	-593	-4%
Households with dependent children	28,687	24%	29%	28%	29,809	25%	-1,122	-4%
- Lone parent	7,229	6%	6%	7%	8,637	7%	-1,408	-16%
Couple households	46,518	38%	44%	42%	43,765	25%	2,753	6%
- Married or civil partnership	29,009	24%	33%	30%	28,337	23%	672	2%
- Cohabiting couple	17,509	14%	11%	12%	15,428	13%	2,081	13%

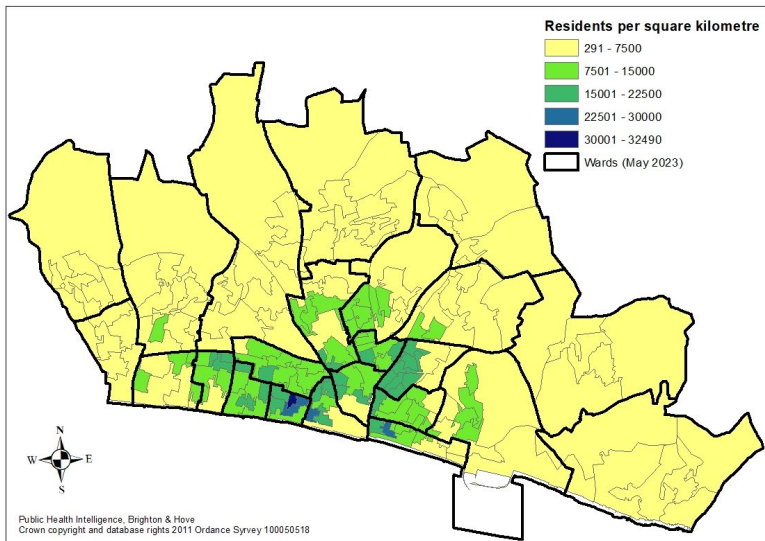
Nearly four out of ten households (38%, 46,518 homes) are couple households, lower than in the South East (44%) and England (42%). Despite having significantly fewer couple households overall we have a higher proportion of cohabiting couple households (14%, 17,509 homes) than both the South East (11%) and England (12%). Compared to the 2011 Census, the number of couple households has increased by 6% (2,753 homes).



Population density

Some of Brighton & Hove's neighbourhoods are the most densely populated in England. Brighton & Hove local authority area has a population density of 3,345 residents per square kilometre. Ranking upper tier local authorities by population density shows that Brighton & Hove is ranked the 48th most densely populated out of 152 authorities (second quintile). Tower Hamlets (15,703 residents per square kilometre) is ranked highest, and Northumberland (64 residents per square kilometre) is ranked lowest.

Map 6: Brighton & Hove population density, 2021 Census



The most densely populated area of the city (map 6) is the neighbourhood north of Western Road between Norfolk Square and the Palmeira Square gyratory (over 30,000 residents per square kilometre). The two LSOAs that make up this neighbourhood are in the 100 (out of 33,700) most densely populated LSOAs in England. In total seven LSOAs in the city are in the 1% most densely populated LSOAs in England.



Housing tenure

Table 4: Housing tenure

	2021 Census: Brighton & Hove (n)	2021 Census: Brighton & Hove (%)	2021 Census: South East (%)	2021 Census: England (%)	2011 Census: Brighton & Hove (n)	2011 Census: Brighton & Hove (%)	Change: Brighton & Hove (n)	Change: Brighton & Hove (%)
Owens outright	30,444	25%	34%	33%	28,397	23%	2,047	7.2%
Owens with a mortgage or loan	31,973	26%	31%	29%	36,393	30%	-4,420	-12.1%
Shared ownership	997	1%	1%	1%	1,045	1%	-48	-4.6%
Rents from council or local authority	11,587	10%	5%	8%	11,928	10%	-341	-2.9%
Other social rented	6,464	5%	8%	9%	6,259	5%	205	3.3%
Private landlord or letting agency	37,167	31%	17%	18%	34,081	28%	3,086	9.1%
Other private rented	2,517	2%	2%	2%	1,878	2%	639	34.0%
Lives rent free	253	0%	0%	0%	1,559	1%	-1,306	-83.8%

Brighton & Hove has a high proportion of households who rent privately (figure 13). Nearly a third of households (33%, 39,684 households) in the city rent privately. This is significantly higher than both the South East (19%) and England (20%) and is the highest proportion in England outside of London and the Isles of Scilly. Between 2011 and 2021 the number of households in the city renting privately increased by 10% or 3,725 households.

Meanwhile homeownership in Brighton & Hove is falling (Table 4). Just over a half of households in the city (51%) own their own home. Significantly lower than seen in the South East (66%) and England (61%). Between 2011 and 2021 the number of households owning their own home fell by 4% (2,373 households). However, the number of households who own their home with a mortgage or loan fell by 12% (4,420 households) while the number of households owning their home outright increased by 7% (2,047 households). This changing pattern of home ownership is something that is also seen nationally.



Accommodation type

The type of accommodation available to Brighton & Hove residents is significantly different to what is found in the South East and England (table 5).



A half of households in the city live in a flat (50%, 60,754 households), more than double that found in the South East (22%) and England (22%) and the highest proportion among upper tier local authorities outside of London. A fifth of households (20%, 23,803 households) live in a flat or bedsit in a converted or shared house, more than five times that seen in the South East (3%) and England (4%) and the highest proportion of any upper tier local authority in England other than six inner London authorities.



A half of households in the city live in a house (50%, 60,554 households), significantly lower than seen in the South East (78%) and England (77%) and the smallest proportion among upper tier local authorities outside of London. Only one in ten households (10%, 12,541 households) live in a detached house, less than half seen in the South East (28%) and England (23%).

Table 5: Accommodation type, 2021 Census

	Brighton & Hove (n)	Brighton & Hove (%)	South East (%)	England (%)
Detached	12,541	10.3%	28.0%	22.9%
Semi-detached	23,918	19.7%	28.4%	31.5%
Terraced	24,095	19.8%	21.3%	23.0%
In a purpose-built block of flats or tenement	33,449	27.6%	16.8%	17.1%
Part of a converted or shared house, including bedsits	23,803	19.6%	3.1%	3.5%
Part of another converted building (former school, church or warehouse)	1,775	1.5%	0.8%	0.8%
In a commercial building (an office building, hotel or over a shop)	1,727	1.4%	0.9%	0.8%
A caravan or other mobile or temporary structure	94	0.1%	0.7%	0.4%



International migration (country of birth)

Brighton & Hove continues to be a destination for people born outside of the UK (table 6). While the overall population of the city has only grown by 1% between the 2011 and 2021 censuses, the city's international migrant population has increased by 27% or 11,500 people.

One in five residents living in Brighton & Hove (20%, 54,343 people) were born outside of the UK. This is significantly higher than both the South East (16%) and England (17%) and the highest seen outside of London, Coventry, Birmingham, Bedford, and Bexley.

Two out of five residents (43%, 23,104 people) born outside of the UK were born in the EU, more than seen in both South East and England. Among residents born in the EU, nearly two thirds (65%, 15,099 people) were born in countries who have been member of the EU since before 2004 (EU14). Again, this is significantly higher than seen in the South East (47%) and England (44%) and is the highest proportion in England outside of London.

A half of residents born outside of the UK were born outside of Europe (51%, 27,670 people) with nearly a half of these residents (45%, 12,517 people) born in the Middle East and Asia, over a quarter (28%, 7,863 people) born in Africa and nearly a fifth (19%, 5,326 people) in the Americas and the Caribbean.

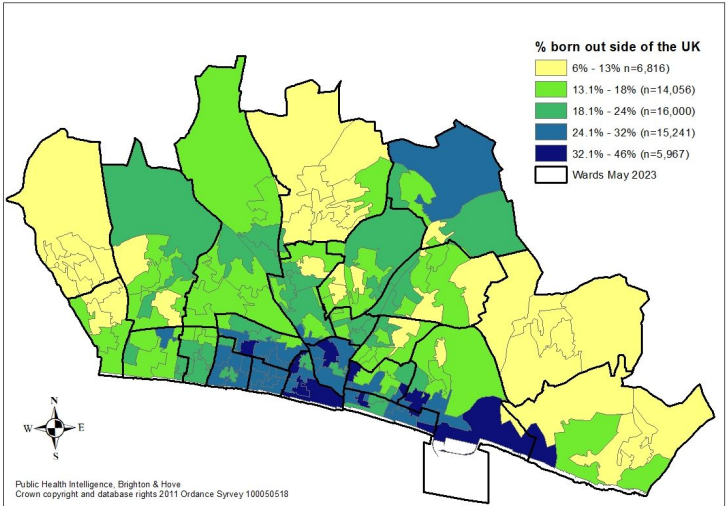
Most residents born outside of the UK were born in Italy (2,997 people), followed by Poland (2,484 people), Spain (2,382 people), India (1,956 people), and the USA (1,655 people). Compared to 2011 the number of Italian residents has increased by 110%, the number of Spanish by 80%. By contrast the number of Polish residents has only increased by 10%.

The city also has a proportionately higher numbers of short-term international migrants. At the time of the 2021 Census, there were 1,519 non-UK short term residents in the city. Residents who plan to stay at least three months but less than 12 months. As a proportion of all non-UK born residents and short term residents (55,862 people), short-term residents make up 2.7% of the total. Double the figure for the South East (1.3%) and England (1.3%).

Table 6: Country of Birth, 2021 Census

Country of Birth	Brighton & Hove (n)	Brighton & Hove: As a percentage of all migrants	Brighton & Hove: Percentage of total population	South East: Percentage of total population	England: Percentage of total population
United Kingdom	222,760	na	80%	84%	83%
All EU countries	23,104	43%	8%	6%	6%
- European Union EU14	15,099	28%	5%	3%	3%
- European Union EU8	5,690	10%	2%	2%	2%
- European Union EU2	1,743	3%	1%	1%	1%
- All other EU countries	572	1%	0%	0%	0%
Europe: Non-EU countries	3,569	7%	1%	1%	1%
Africa	7,863	14%	3%	3%	3%
Middle East and Asia	12,517	23%	5%	5%	6%
The Americas and the Caribbean	5,326	10%	2%	1%	1%
Antarctica and Oceania and Other	1,759	3%	1%	0%	0%
British Overseas	205	0%	0%	0%	0%
All Non United Kingdom	54,343	100%	20%	16%	17%

Map 7: Location of residents born outside of the UK, 2021 Census



Residents born outside of the UK are concentrated in central coastal neighbourhoods (map 7) where there are eight neighbourhoods (LSOAs) where more than a third of residents are migrants (the dark blue areas on the map). This compares to areas in North Portslade where as few as one in twenty residents are international migrants.



Ethnicity

Table 7: Ethnicity

	2021 Census, Brighton & Hove (n)	2021 Census, Brighton & Hove: Percentage of Black & Racially Minoritised	2021 Census, Brighton & Hove: Percentage of total population	2021 Census, South East: Percentage of total population	2021 Census, England: Percentage of total population	2011 Census, Brighton & Hove (n)	2011 Census, Brighton & Hove (%)	Change Brighton & Hove (n)	Change Brighton & Hove (%)
White:	236,571	na	85.4%	86.3%	81.0%	243,512	89.1%	-6,941	-3%
- UK or British	204,831	na	73.9%	78.8%	73.5%	220,018	80.5%	-15,187	-7%
- Irish	3,944	5.5%	1.4%	0.8%	0.9%	3,772	1.4%	172	5%
- Gypsy/Irish Traveller	197	0.3%	0.1%	0.2%	0.1%	198	0.1%	-1	-1%
- Roma	787	1.1%	0.3%	0.1%	0.2%	na	na	na	na
- Other White	26,812	37.1%	9.7%	6.3%	6.3%	19,524	7.1%	7,288	37%
Asian, Asian British:	13,217	18.3%	4.8%	7.0%	9.6%	11,278	4.1%	1,939	17%
Black, Black British	5,458	7.6%	2.0%	2.4%	4.2%	4,188	1.5%	1,270	30%
Mixed or Multiple ethnic:	13,228	18.3%	4.8%	2.8%	3.0%	10,408	3.8%	2,820	27%
Arab	3,049	4.2%	1.1%	0.3%	0.6%	2,184	0.8%	865	40%
Any other ethnic group	5,580	7.7%	2.0%	1.1%	1.6%	1,799	0.7%	3,781	210%
Black and Racially Minoritised (non white UK/British)	72,272	100.0%	26.1%	21.2%	26.5%	53,351	19.5%	18,921	35%

Brighton & Hove is continuing in becoming a more ethnically diverse city (table 7). While the overall number of residents has only increased by 1% between the last census the number of Black and Racially Minoritised residents has increased by 35% or 18,921 people. More than a quarter of residents (26%, 72,272 people) are Black and Racially Minoritised under the definition used by Brighton and Hove City Council, which is, all ethnic groups apart from White UK/British.

The proportion of Black and Racially Minoritised residents is Brighton and Hove (26%) is significantly higher than seen in the South East (21%) but similar to what is seen in England (26%).



Arab residents have increased the most since the last Census, increasing by 40% (865 people) to 3,049 residents.



Ethnic group Other White remains the largest Black and Racially Minoritised group in the city with 26,812 residents. Making up more than a third of Black and Racially Minoritised residents (37%) and one in ten of all residents (10%).



Nearly a fifth of Black and Racially Minoritised residents (18%) and one in twenty of all residents (5%, 13,228 people) are of mixed ethnicity. Residents of mixed ethnicity have increased by more than a quarter (27%, 2,820 people).

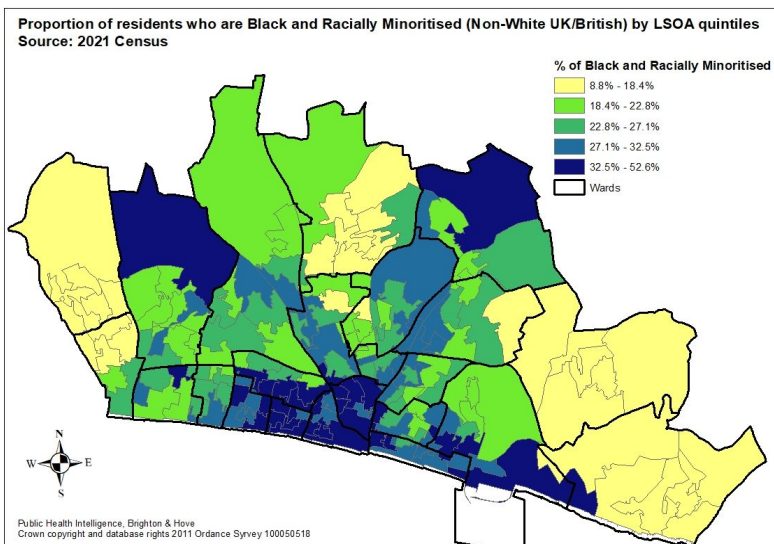


Nearly a fifth of all Black and Racially Minoritised resident (18%) and one in twenty of all residents (5%, 13,217 people) are Asian or Asian British. Asian or Asian British residents have increased by 17% (1,939 people) since the last Census.



Black or Black British residents have increased by nearly a third (30%, 1,370 people). Black or Black British residents make up nearly one in ten (8%) of all Black and Racially Minoritised residents.

Map 8: Location of Black and Racially Minoritised resident, 2021 Census



The distribution of Black and Racially Minoritised residents is not even across the city (map 8) with two neighbourhoods one near Brighton Station and one around Turner and Albion Hill having over 50% Black and Racially Minoritised residents and two neighbourhoods in North Portslade with less than 10% Black and Racially Minoritised residents.

Black and Racially Minoritised residents are concentrated in central and coastal areas of the city particularly in areas west of the Old Steine, westwards towards Hove along Western Road.

Households in Brighton & Hove are among the most ethnically diverse in the country. There are 79,301 multi person households in the city. More than a quarter (27%, 21,775 households) are multi ethnic households. This is significantly higher than in the South East (16%) and England (15%) and the highest in England outside of London.



A person's first or preferred language

English is not the first or preferred language for nearly one in ten Brighton & Hove residents (table 8). For 24,579 residents (9%) English is not their first or preferred language. This is significantly higher than seen in the South East (7%) but similar to England (9%).

Table 8: A person's first or preferred language, 2021 Census

	Brighton and Hove (n)	Brighton and Hove (%)	South East (%)	England (%)
English	245,614	90.9%	92.8%	90.8%
Arabic	2,620	1.0%	0.2%	0.4%
Spanish	2,507	0.9%	0.3%	0.4%
Italian	2,221	0.8%	0.2%	0.3%
Polish	1,663	0.6%	1.0%	1.1%
Portuguese	1,418	0.5%	0.4%	0.4%
French	1,179	0.4%	0.2%	0.2%
Hungarian	989	0.4%	0.2%	0.2%
Greek	865	0.3%	0.1%	0.1%
Romanian	827	0.3%	0.7%	0.9%
German	585	0.2%	0.1%	0.1%
Other EU language	2,162	0.8%	0.6%	0.7%
Other European language: Including Russian	1,119	0.4%	0.3%	0.3%
Turkish	679	0.3%	0.1%	0.2%
West or Central Asian language	1,161	0.4%	0.2%	0.4%
- Persian or Farsi	688	0.3%	0.1%	0.2%
- Any other West or Central Asian language	473	0.2%	0.1%	0.2%
South Asian language	1,621	0.6%	1.8%	2.5%
- Bengali (with Sylheti and Chatgaya)	612	0.2%	0.1%	0.4%
- Any other South Asian language	1,009	0.4%	1.7%	2.1%
East Asian language	2,376	0.9%	0.6%	0.6%
- All Chinese languages: Including Mandarin and Cantonese	1,441	0.5%	0.3%	0.4%
- Any other East Asian language	935	0.3%	0.3%	0.3%
African language	373	0.1%	0.2%	0.4%
Sign language	145	0.1%	0.0%	0.0%

Only languages with a published number of speaker of over 500 is included in this table.

Similar to the last Census the most common language spoken is Arabic (2,620 people) followed by Spanish (2,507 people), Italian (2,221 people), Polish (1,663 people) and Portuguese (1,418 people). All languages that were in the top 10 languages at the 2011 Census.

Compared to the South East and England proportionally we have twice as many residents whose preferred language is Arabic, Spanish, Italian, French, or Hungarian but far fewer whose preferred language is Polish or Romanian.

For 145 residents their preferred language is a sign language with 120 residents preferring British Sign Language. The number of residents preferring sign language has fallen by a third since the last Census.

While 24,577 residents have a preferred language other than English. **There is a high level of English proficiency within this group.** Nearly nine out of ten (87%, 21,459 people) speak English well or very well with only 13% (3,118 people) not able to speak English or not able to speak English well. The proportion of residents speaking English well or very well is higher than seen in both the South East (85%) and England (80%) and is the 14th highest among 153 upper tier local authorities.



Sexual orientation and gender identity

For the first time ever the 2021 Census asked questions about sexual orientation and gender identity. The sexual orientation and gender identity questions were voluntary and only asked of residents aged 16 or older. More than nine out of ten residents chose to answer the sexuality questions (91%) and the gender identity questions (93%).

Note: Sexual orientation is an umbrella term covering sexual identity, attraction, and behaviour. For an individual respondent, these may not be the same. For example, someone in an opposite-sex relationship may also experience same-sex attraction, and vice versa. This means the statistics should be interpreted purely as showing how people responded to the question, rather than being about whom they are attracted to or their actual relationships.

Note: Gender identity refers to a person's sense of their own gender, whether male, female or another category such as non-binary. This may or may not be the same as their sex registered at birth.



Sexual orientation

Brighton & Hove has the highest proportion of residents identifying as lesbian, gay, or bisexual (LGB+) in England (table 9). More than one in ten residents aged 16 or over (10.6%, 25,375 people) identify with an LGB+ sexual orientation. This is three times the percentage found in both the South East (3.1%) and England (3.1%) and the highest seen in any upper tier local authority in England.

Table 9: Sexual orientation, 2021 Census

	Brighton and Hove (n)	Brighton and Hove (%)	South East (%)	England (%)
All usual residents aged 16 and older	235,367	100%	100%	100%
Straight or Heterosexual	189,745	80.6%	89.8%	89.4%
Gay or Lesbian	13,726	5.8%	1.5%	1.5%
Bisexual	8,916	3.8%	1.3%	1.3%
Pansexual	1,525	0.6%	0.2%	0.2%
Asexual	314	0.1%	0.1%	0.1%
Queer	654	0.3%	0.0%	0.0%
All other sexual orientations	112	0.0%	0.0%	0.0%
Not answered	20,375	8.7%	7.0%	7.5%



Gender identity

At least 2,341 residents (1.0%) in Brighton & Hove identify with a gender different from their sex identified at birth (table 10). This is double seen in the South East (0.5%) and England (0.5%). The proportion of residents aged 16 and over in Brighton & Hove identifying with a gender different from their sex registered at birth (1.0%) is the highest seen outside of London, Luton, Manchester, and Leicester.

Table 10: Gender identity, 2021 Census

	Brighton and Hove (n)	Brighton and Hove (%)	South East (%)	England (%)
All usual residents aged 16 years and over	235,366	100%	100%	100%
Gender identity the same as sex registered at birth	218,401	92.8%	94.1%	93.5%
Gender identity different from sex registered at birth but no specific identity given	476	0.2%	0.2%	0.2%
Trans woman	329	0.1%	0.1%	0.1%
Trans man	362	0.2%	0.1%	0.1%
Non-binary	835	0.4%	0.1%	0.1%
All other gender identities	339	0.1%	0.04%	0.04%
Not answered	14,624	6.2%	5.4%	6.0%

More than a third of residents (36%, 835 people) who identify with a gender different from their sex identified at birth, identify as non-binary. This is 0.4% of the total population and five times higher than seen in the South East (0.1%) and England (0.1%). The proportion of residents aged 16 and over in Brighton & Hove identifying as non-binary is the highest seen in any upper tier local authority in England.



Long term health problem or disability

Brighton & Hove residents are significantly more likely to be disabled than people living in the South East and England (table 11). Nearly one in five residents (19%, 51,797 people) are disabled as defined by the Equalities Act. This is significantly higher than seen in both the South East (16%) and England (17%).

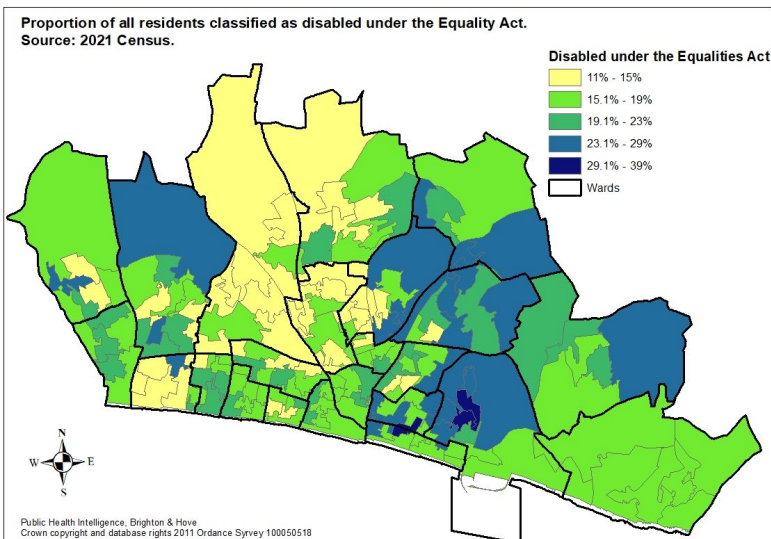
Note: The Equality Act defines an individual as disabled if they have a physical or mental impairment that has a substantial and long-term negative effect on their ability to carry out normal day-to-day activities.

Table 11: Long-term health problems and disability, 2021 Census

	Brighton and Hove (n)	Brighton and Hove (%)	South East (%)	England (%)
All usual residents	277,103			
Disabled under the Equality Act	51,797	19%	16%	17%
- Day-to-day activities limited a lot	20,351	7%	6%	7%
- Day-to-day activities limited a little	31,446	11%	10%	10%
Not disabled under the Equality Act	225,306	81%	84%	83%
- Has long term physical or mental health condition but day-to-day activities are not limited	20,804	8%	8%	7%
- No long term physical or mental health conditions	204,502	74%	76%	76%

For 20,351 disabled residents their day to day activities are limited a lot with a further 31,446 having their activities limited a little. 20,804 residents have a long term physical or mental health condition that does not affect their day to day activity.

Map 9: Location of disabled residents



Disabled residents (map 9) are concentrated in the city neighbourhoods with high levels of deprivation (2019 IMD). The distribution of disabled residents across Brighton & Hove show concentrations seen in central eastern neighbourhoods particularly in East Brighton, Queens Park and Hollingdean. But also, in the city's other deprived neighbourhoods in Woodingdean, Hangleton and Mile Oak.

Provision of unpaid care

While the total proportion of Brighton & Hove residents providing unpaid care has fallen, the proportion of residents providing more than 20 hours of unpaid care has increased (table 12).

Table 12: Provision of unpaid care

	Census 2021: Brighton and Hove (n)	2021 Census: Brighton and Hove (%)	2021 Census: South East (%)	2021 Census: England (%)	2011 Census: Brighton & Hove (%)
Provides no unpaid care	244,548	92.2%	91.6%	91.2%	91.2%
Provides some unpaid care	20,804	7.8%	8.4%	8.8%	8.8%
Provides 1 to 19 hours or less unpaid care a week	11,334	4.3%	4.4%	4.3%	6.2%
Provides 20 to 49 hours unpaid care a week	4,040	1.5%	1.5%	1.8%	0.9%
Provides 50 or more hours unpaid care a week	5,430	2.0%	2.4%	2.6%	1.7%



One in thirteen residents (7.8%, 20,804 people) provides at least one hour of unpaid care to someone with a disability or problems relating to age, this is lower than the South East (8.4%) and England (8.8%). The proportion providing unpaid care has fallen one percentage point from 8.8% in 2011.



Nearly one in 25 residents (3.6%, 9,470 people) provide 20 or more hours of unpaid care, while lower than seen in the South East (3.9%) and England (4.4%) it is one percentage point higher than seen at the 2011 Census (2.6%).



Access to a range of data from Census 2021, including local data at different geographical levels, maps and 2011 census data will be available locally on [Community Insight](#) and nationally at [Census 2021](#)