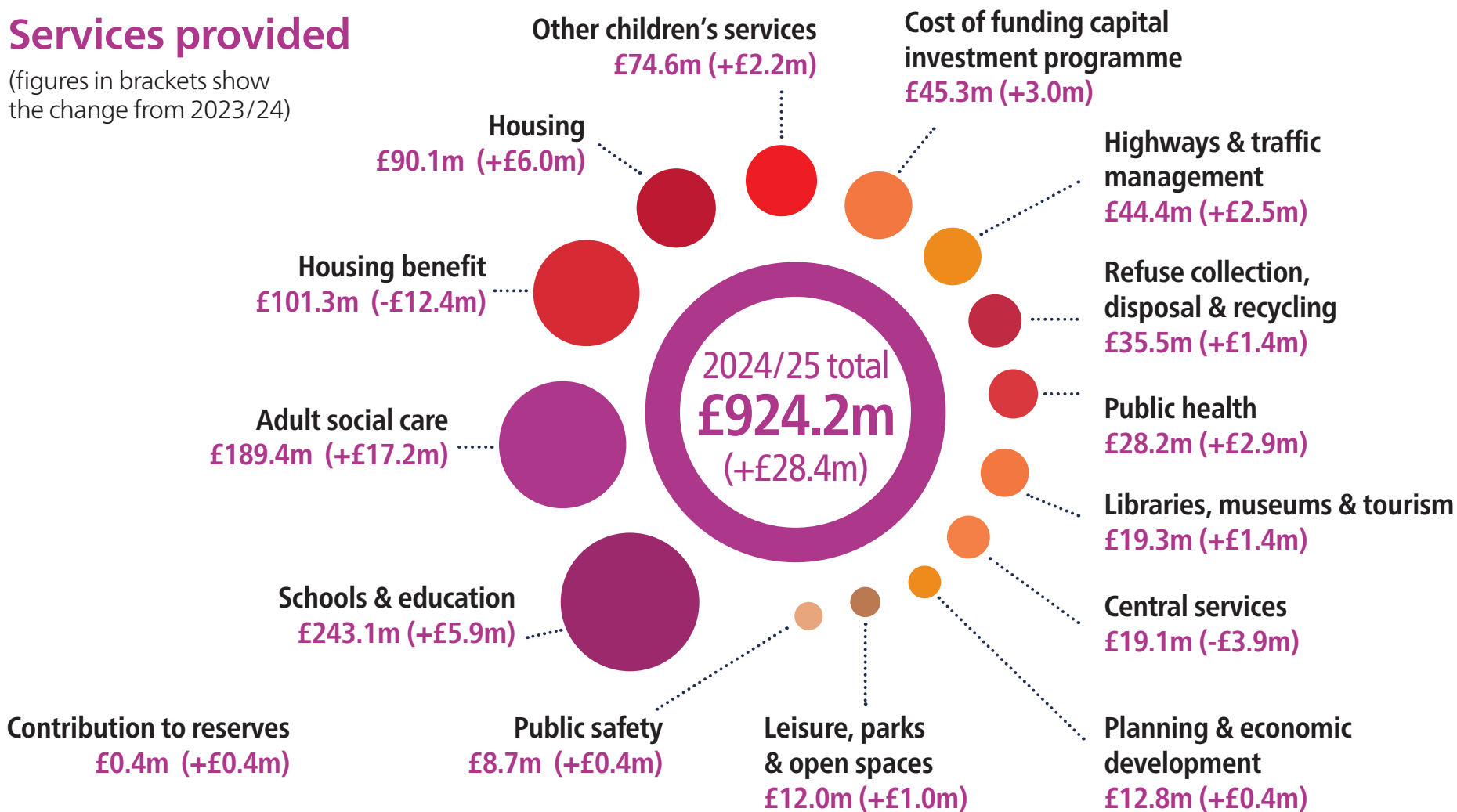


The cost of Brighton & Hove services

April 2024 to March 2025

Services provided

(figures in brackets show the change from 2023/24)

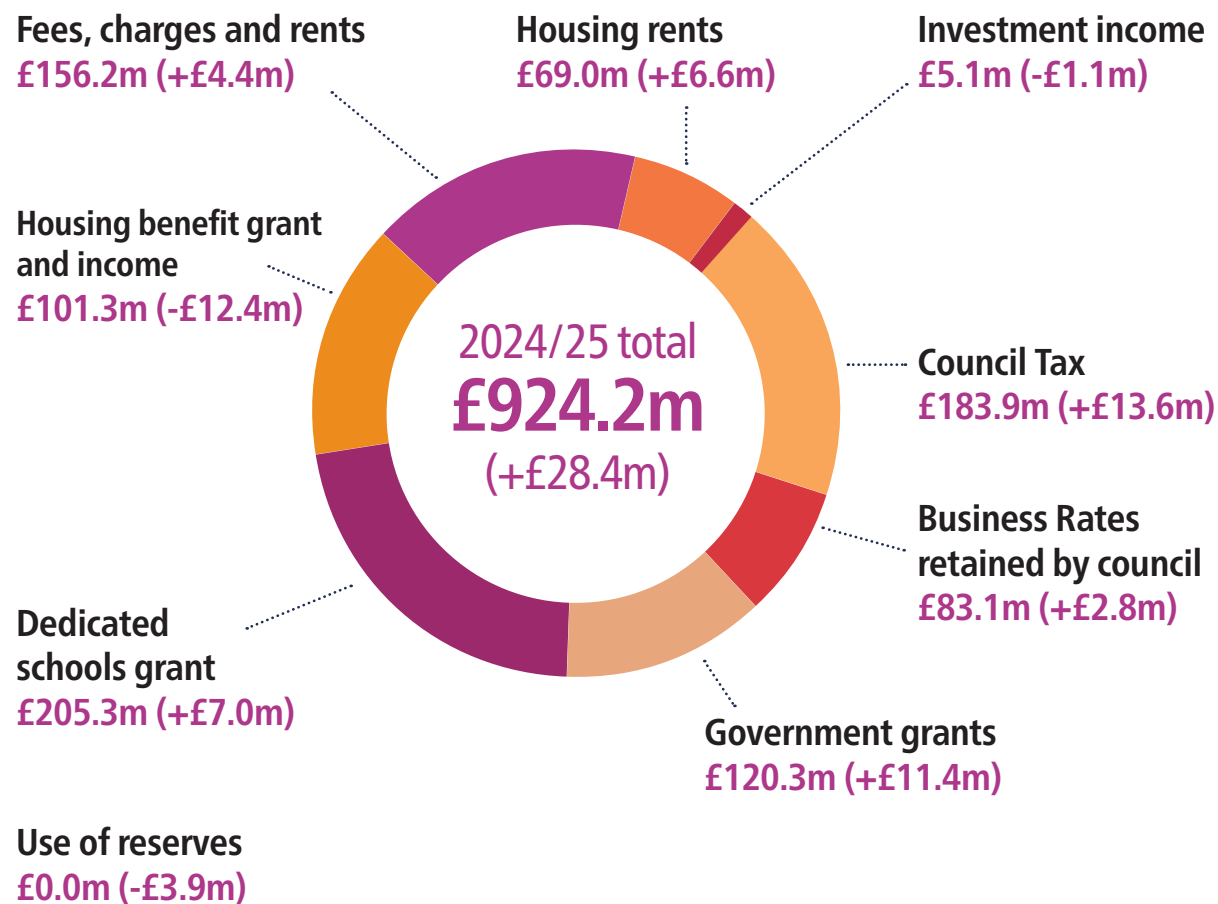


The cost of Brighton & Hove services

April 2024 to March 2025

Where the money comes from

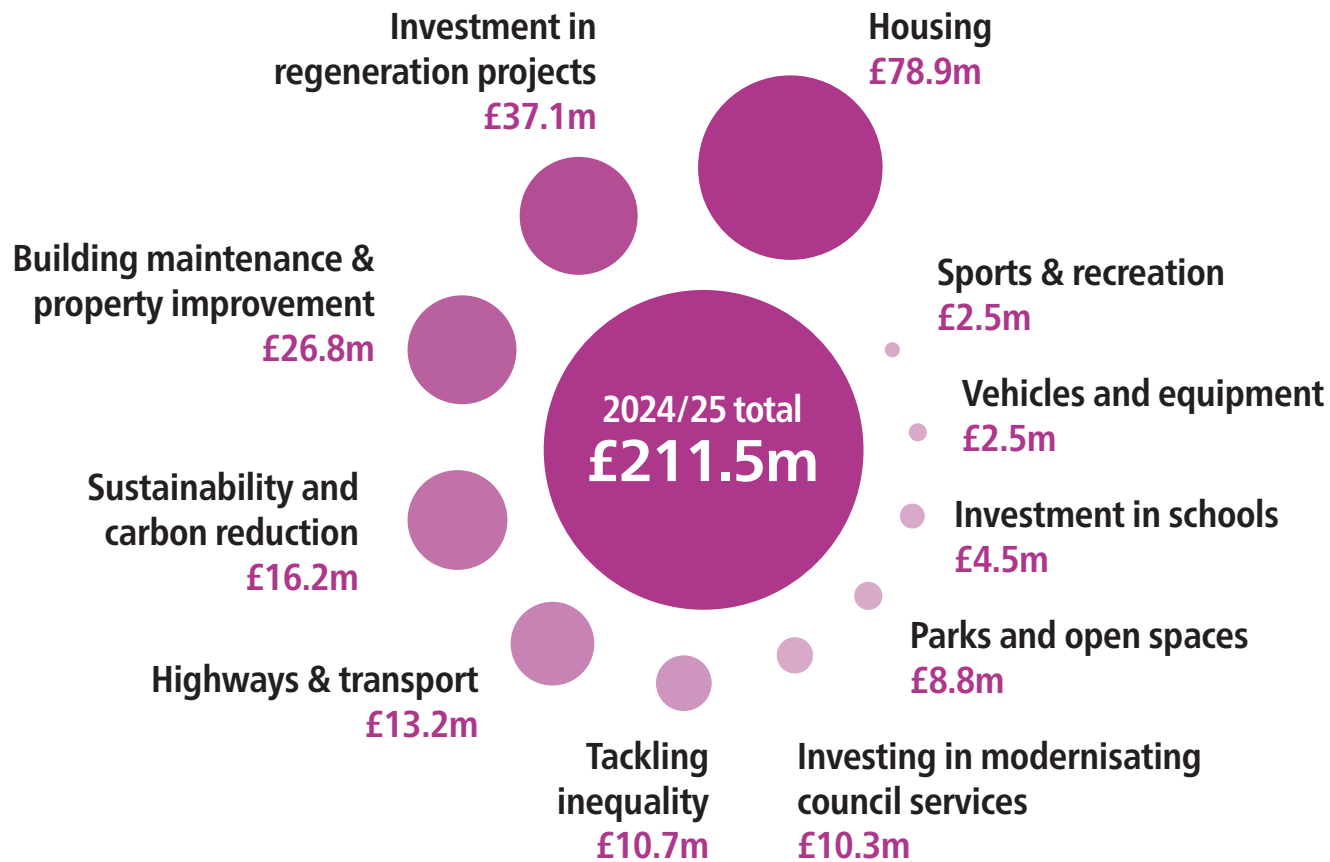
(figures in brackets show the change from 2023/24)



The cost of Brighton & Hove services

April 2024 to March 2025

Capital investment programme



The cost of Brighton & Hove services

April 2024 to March 2025

Standard Council Tax rates in Brighton & Hove 1 April 2024 to 31 March 2025

Band	Range of property values (1 April 1991)	Council tax for 2 or more adults only		Council Tax for one adult	
		2023/24	2024/25	2023/24	2024/25
A	Up to £40,000	1,485.27	1,558.71	1,113.95	1,169.03
B	Over £40,000 & up to £52,000	1,732.83	1,818.49	1,299.62	1,363.87
C	Over £52,000 & up to £68,000	1,980.36	2,078.28	1,485.27	1,558.71
D	Over £68,000 & up to £88,000	2,227.91	2,338.06	1,670.93	1,753.54
E	Over £88,000 & up to £120,000	2,722.99	2,857.63	2,042.24	2,143.22
F	Over £120,000 & up to £160,000	3,218.10	3,377.19	2,413.57	2,532.89
G	Over £160,000 & up to £320,000	3,713.18	3,896.77	2,784.88	2,922.58
H	Over £320,000	4,455.82	4,676.12	3,341.86	3,507.09

Council Tax in Brighton & Hove for enclosure and Rottingdean Parish residents (for two or more adults) 1 April 2024 to 31 March 2025

	Hanover Crescent		Royal Crescent		Marine Square		Rottingdean Parish	
	2023/24	2024/25	2023/24	2024/25	2023/24	2024/25	2023/24	2024/25
A	1,644.53	1,730.54	1,666.64	1,785.42	1,600.14	1,681.78	1,507.05	1,580.58
B	1,918.63	2,018.96	1,944.42	2,082.99	1,866.84	1,962.07	1,758.23	1,844.01
C	2,192.70	2,307.39	2,222.18	2,380.56	2,133.51	2,242.37	2,009.39	2,107.44
D	2,466.80	2,595.81	2,499.96	2,678.13	2,400.21	2,522.66	2,260.57	2,370.87
E	3,014.97	3,172.66	3,055.50	3,273.27	2,933.58	3,083.25	2,762.91	2,897.73
F	3,563.16	3,749.50	3,611.06	3,868.40	3,466.98	3,643.83	3,265.27	3,424.58
G	4,111.33	4,326.35	4,166.60	4,463.55	4,000.35	4,204.44	3,767.62	3,951.45
H	4,933.60	5,191.62	4,999.92	5,356.26	4,800.42	5,045.32	4,521.14	4,741.74

Council Tax bands are based on your property's open market value on 1 April 1991. These bands are set by the Valuation Office Agency.

You can get more information at www.gov.uk/council-tax-bands or by phoning 03000 501501.

Be wary of anyone who may offer to challenge your Council Tax band on your behalf for a fee. You can do this free of charge with the Valuation Office. Bands can go up as well as down.

Learn more and contact us about your Council Tax at www.brighton-hove.gov.uk/counciltax

Your total Council Tax bill also includes funding for Sussex Police and East Sussex Fire and Rescue Service:

www.sussex-pcc.gov.uk

www.esfrs.org

Adult Social Care Precept

April 2024 to March 2025

For councils like Brighton & Hove City Council with adult social care responsibilities, the Secretary of State for Levelling Up, Housing & Communities has made an offer that local authorities defined as 'adult social care authorities' under Part 1 of the Care Act 2014 are able to charge an additional 'precept' on their council tax without holding a referendum, to assist the authority in meeting expenditure on adult social care.

In relation to the financial year 2024/25 the Secretary of State has determined (and the House of Commons has approved) a referendum principle of 5%, comprising 2% for expenditure on adult social care and 3% for other expenditure.

The Adult Social Care Precept for Brighton & Hove City Council

Brighton & Hove City Council is charging a further 2% adult social care precept in 2024/25 to provide additional funding for spending pressures in adult social care which include:

- Demographic growth (including children with learning disabilities transitioning into adult social care)
- Increased complexity of care across many community care services
- Increasing commissioning costs due to inflationary and other cost pressures across the social care provider market

