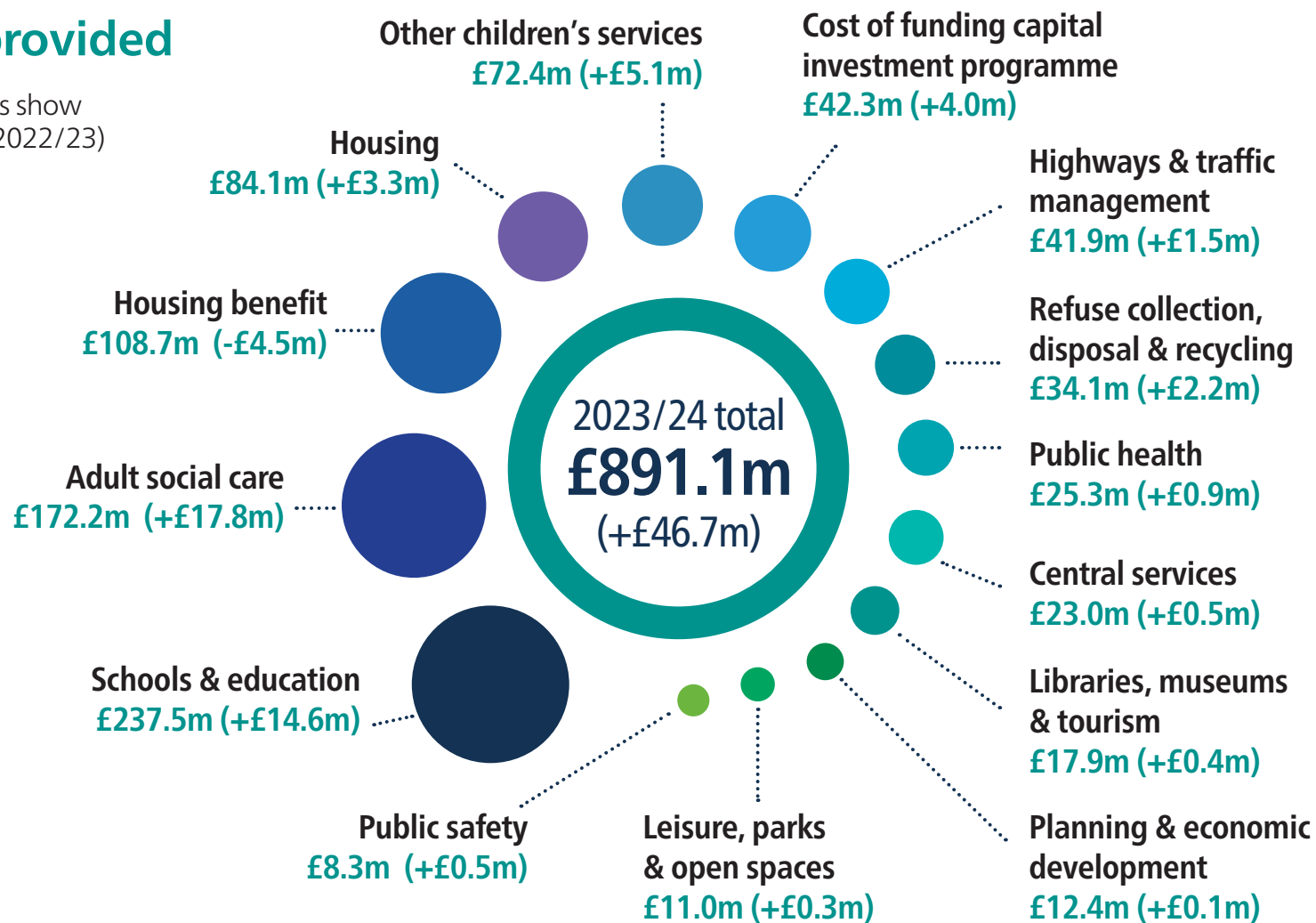


# The cost of Brighton & Hove services

April 2023 to March 2024

## Services provided

(figures in brackets show the change from 2022/23)



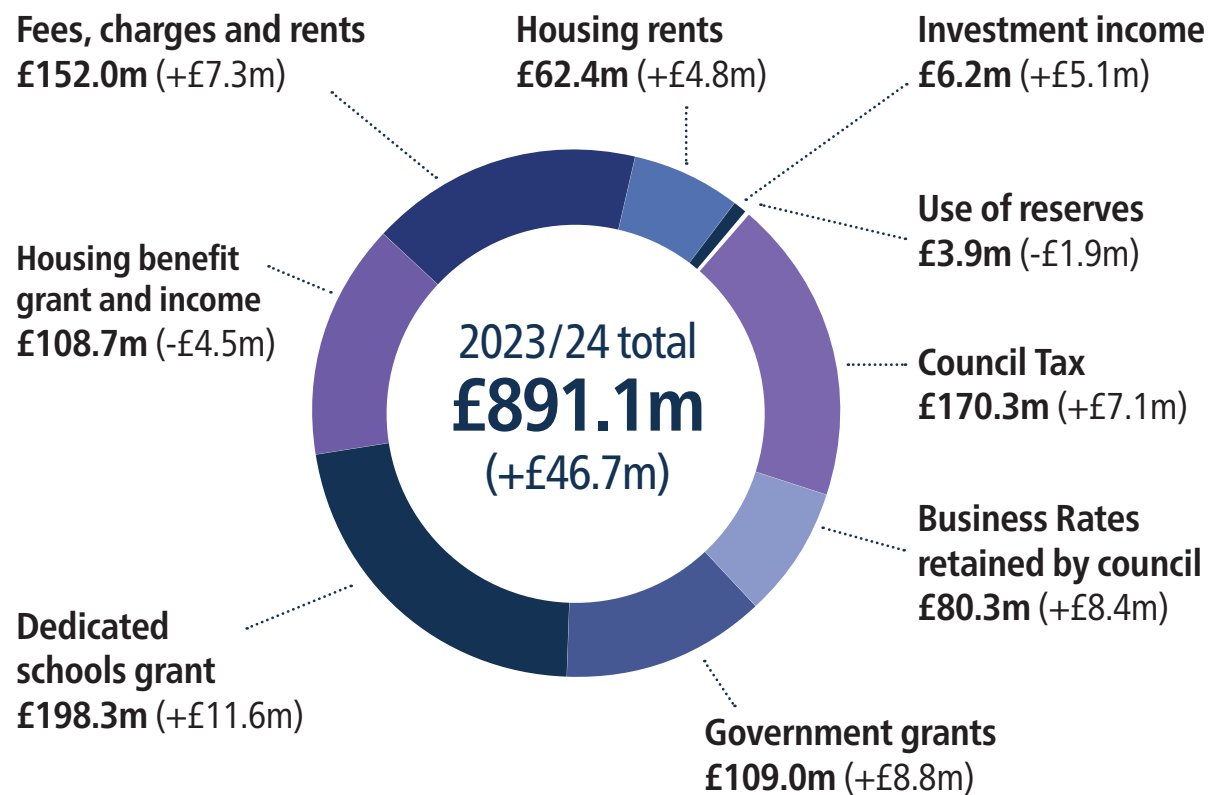
Learn more about our budget at [www.brighton-hove.gov.uk/bhbudget](http://www.brighton-hove.gov.uk/bhbudget)

# The cost of Brighton & Hove services

April 2023 to March 2024

## Where the money comes from

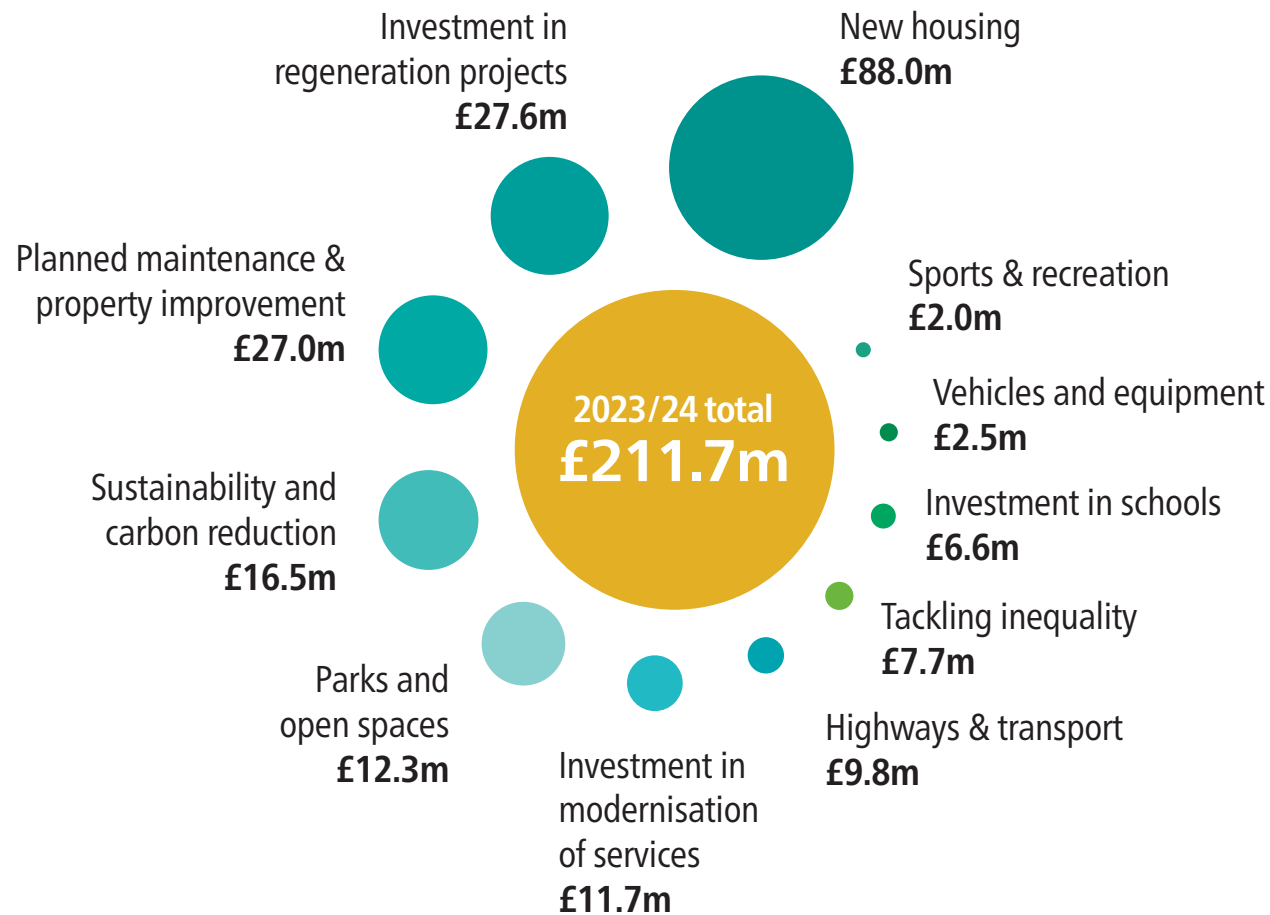
(figures in brackets show the change from 2022/23)



# The cost of Brighton & Hove services

April 2023 to March 2024

## Capital investment programme



# The cost of Brighton & Hove services

April 2023 to March 2024

Standard Council Tax rates in Brighton & Hove		1 April 2023 to 31 March 2024			
Band	Range of property values (1 April 1991)	Council tax for 2 or more adults only		Council Tax for one adult	
		2022/23	2023/24	2022/23	2023/24
<b>A</b>	Up to £40,000	1,412.21	1,485.27	1,059.16	1,113.95
<b>B</b>	Over £40,000 & up to £52,000	1,647.58	1,732.83	1,235.68	1,299.62
<b>C</b>	Over £52,000 & up to £68,000	1,882.94	1,980.36	1,412.20	1,485.27
<b>D</b>	Over £68,000 & up to £88,000	2,118.31	2,227.91	1,588.73	1,670.93
<b>E</b>	Over £88,000 & up to £120,000	2,589.04	2,722.99	1,941.78	2,042.24
<b>F</b>	Over £120,000 & up to £160,000	3,059.78	3,218.10	2,294.83	2,413.57
<b>G</b>	Over £160,000 & up to £320,000	3,530.52	3,713.18	2,647.89	2,784.88
<b>H</b>	Over £320,000	4,236.62	4,455.82	3,177.46	3,341.86

Council Tax in Brighton & Hove for enclosure and Rottingdean Parish residents (for two or more adults)					1 April 2023 to 31 March 2024			
	Hanover Crescent		Royal Crescent		Marine Square		Rottingdean Parish	
	2022/23	2023/24	2022/23	2023/24	2022/23	2023/24	2022/23	2023/24
<b>A</b>	1,554.66	1,644.53	1,593.58	1,666.64	1,523.86	1,600.14	1,433.98	1,507.05
<b>B</b>	1,813.76	1,918.63	1,859.17	1,944.42	1,777.83	1,866.84	1,672.98	1,758.23
<b>C</b>	2,072.87	2,192.70	2,124.77	2,222.18	2,031.81	2,133.51	1,911.97	2,009.39
<b>D</b>	2,331.98	2,466.80	2,390.36	2,499.96	2,285.78	2,400.21	2,150.97	2,260.57
<b>E</b>	2,850.20	3,014.97	2,921.55	3,055.50	2,793.73	2,933.58	2,628.96	2,762.91
<b>F</b>	3,368.41	3,563.16	3,452.74	3,611.06	3,301.68	3,466.98	3,106.95	3,265.27
<b>G</b>	3,886.64	4,111.33	3,983.94	4,166.60	3,809.64	4,000.35	3,584.95	3,767.62
<b>H</b>	4,663.96	4,933.60	4,780.72	4,999.92	4,571.56	4,800.42	4,301.94	4,521.14

Council Tax bands are based on your property's open market value on 1 April 1991. These bands are set by the Valuation Office Agency.

You can get more information at [www.gov.uk/council-tax-bands](http://www.gov.uk/council-tax-bands) or by phoning 03000 501501.

Be wary of anyone who may offer to challenge your Council Tax band on your behalf for a fee. You can do this free of charge with the Valuation Office. Bands can go up as well as down.

Learn more and contact us about your Council Tax at [www.brighton-hove.gov.uk/counciltax](http://www.brighton-hove.gov.uk/counciltax)

Your total Council Tax bill also includes funding for Sussex Police and East Sussex Fire and Rescue Service:

[www.sussex-pcc.gov.uk](http://www.sussex-pcc.gov.uk)

[www.esfrs.org](http://www.esfrs.org)

# Adult Social Care Precept

April 2023 to March 2024

**For councils like Brighton & Hove City Council with adult social care responsibilities, the Secretary of State has made the following statement to explain any charge for adult social care included in the council tax increase.**

The Secretary of State for Communities and Local Government has made an offer to local authorities defined as 'adult social care authorities' under Part 1 of the Care Act 2014.

The offer was the option of an adult social care authority being able to charge an additional 'precept' on its council tax without holding a referendum, to assist the authority in meeting expenditure on adult social care.

In relation to the financial year 2023/24 the Secretary of State has determined (and the House of Commons has approved) a referendum principle of 5%, comprising 2% for expenditure on adult social care and 3% for other expenditure.

## **The Adult Social Care Precept for Brighton & Hove City Council**

Brighton & Hove City Council is charging a further 2% adult social care precept in 2023/24 to provide additional funding for spending pressures in adult social care which include:

- Demographic growth (including children transitioning into adult social care)
- Increased complexity of care across all community care services
- Increasing commissioning costs due to inflationary and other cost pressures across the social care provider market.

**Demand  
for  
services**