



Legend

- Stanmer Park
- Woodland & trees
- General Grassland
- Mown grass
- Building / Structure
- New shared access route

TRO Elements

- No parking on road
- Car park spaces:

- 1. Lower Lodges East: 115
- 2. Lower Lodges West: 73
- 3. Patchway: 133
- 4. Chalk Hill: 12
- 5. Upper Lodges: 45

- Disabled car park spaces: 11 (inc. in above)

- Solo motorcycle parking spaces: 6

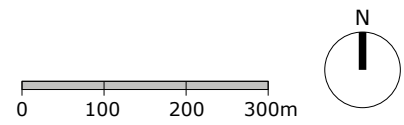
- Overflow car parks:

- 6. Lower Lodges Pitches: 650
- 7. Patchway A: 54 overflow parking for use during peak season April to October or special events only
- 8. Patchway B: 70 Plumpton College parking - term time only 01 September to 01 July
- 9. Church Car Park: 40

- Loading bay:

- 10. Walled Garden Cafe

BUS - Bus and coach loading / unloading area



Iss	Date	Issue Notes
-----	------	-------------

LUC

43 Chalton Street
LONDON NW1 1JD
T: 020 7383 5784
F: 020 7383 4798
london@landuse.co.uk
www.landuse.co.uk

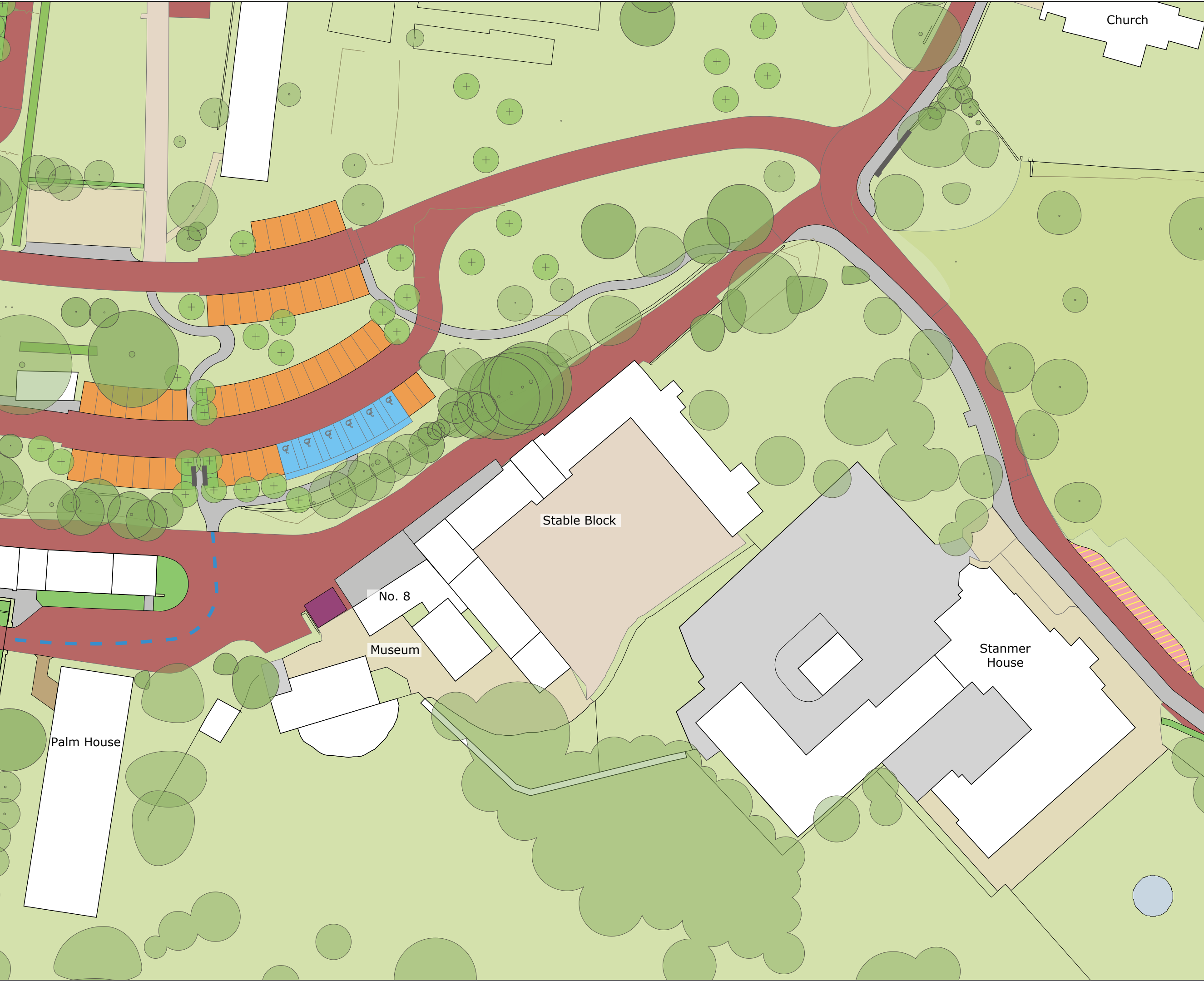
Project
Stanmer Park

Client
Brighton & Hove City Council

Title
TRO - Traffic Regulation Order Proposals

Scale 1:6000@A3		Status For Consultation	
Job No. 10049	Drawing No. 1005		Issue H

Do not scale from this drawing
© Drawing & Design Copyright of Land Use Consultants



Legend

Stanmer Park

Woodland & trees

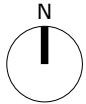
General Grassland

Mown grass

Building / Structure

New shared access route

TRO Elements

No parking on roadStanmer House waiting area, drop off & pick up max 20minStanmer Museum loading bayPedestrian route from car park

Iss	Date	Issue Notes	Rev	By	Date
<div><div>LUC</div><div>43 Chalton Street LONDON NW1 1JD T: 020 7383 5784 F: 020 7383 4798 london@landuse.co.uk www.landuse.co.uk</div></div>					
Project Stanmer Park					
Client Brighton & Hove City Council					
Title TRO - Traffic Regulation Order Proposals Stanmer House & Musuem					
Scale 1:500@A3		Status For Consultation			
Job No. 10049	Drawing No. 1007	Issue D			
<small>Do not scale from this drawing © Drawing & Design Copyright of Land Use Consultants</small>					