

Events at Devil's Dyke

For more information, or to join our dedicated volunteer team, phone **01273 857712** or e-mail devilsdyke@nationaltrust.org.uk

30-31 March and 6-7 April

Camilla and Roly's Lambing weekends

10am until 4pm. Meet at Saddlescombe Farm (1 mile walk east via South Downs Way – approx. 20mins from Devil's Dyke bus stop). £15 for a family of 4 or £6 per adult and £3 per child, under 2s are free (cash only please).

20-22 April Cadbury Easter Egg hunt

Meet at the National Trust van to the north of the pub – between 11am and 3.30pm. £3 per participant.

22 April Easter Egg rolling

Meet at the head of the Dyke Valley at 10.45am. Event ends at 12noon. £1 per participant.

23 June Saddlescombe Farm Open day

10.30am to 4pm: Tours of ancient farm buildings and donkey wheel, plus heavy horses, farmers' market and children's games. £5 adult, £3 child, £13 family (cash only please).

The WildFlour Cafe at Saddlescombe

Open Tuesday to Sunday, 10am - 5pm between March and the end of October, and weekends only in November. All drinks, cakes and meals are homemade. Show a valid bus ticket or pass and get 10% off food and drink. We have a Facebook page and website.

Healthy days out are a Breeze

The Breeze bus routes are your ticket to fresh air and beautiful walks, in the glorious scenery of the stunning South Downs... they're your passport to a healthy day out (with a very low carbon footprint too!).



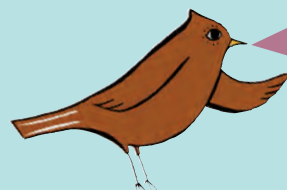
Devil's Dyke lies in the heart of 'The Living Coast' which is recognised by UNESCO as a World Biosphere region that connects people and nature. Visit www.livingcoast.org.uk/explore/best-places-to-visit

A scenic weekend walk from Ditchling Beacon to Devil's Dyke

Catch the weekend-only 79 bus to Ditchling Beacon. From the bus stop, walk west along the South Downs Way for about six miles to Devil's Dyke, via Saddlescombe. At the top of the Dyke, turn right along the road to the 77 bus stop (opposite the Devil's Dyke pub). For 79 bus times pick up the 'Breeze up to Ditchling Beacon' leaflet, call 01273 292480 or go to www.buses.co.uk

Exploring Devil's Dyke

A range of leaflets about the area, and ideas for walks or activities, is available from the National Trust information point at Devil's Dyke or contact 01273 857712. www.nationaltrust.org.uk/devils-dyke



Taxi numbers (in case you miss the last bus!) are:

01273 747474,
01273 204060,
01273 414141,
01273 205205.

Have you seen?

See the two other 'Breeze up to the Downs' leaflets about how to get to Stanmer Park and Ditchling Beacon.



See also our 'South Downs Bus Walks' leaflets. Call 01273 292480 for copies or go to www.brighton-hove.gov.uk/breezebuses

Visit Booth Museum of Natural History

free admission. On Dyke Road. Bus stop outside. Visit www.brightonmuseums.org.uk/booth or call 01273 292777 for opening times.

Find out about interesting sights along the route and facts about Devil's Dyke. Download the Devil's Dyke Podcast at www.visitbrighton.com/things-to-do/walking-guides/podcasts Things you'd never see from a car!



South Downs walks app

Download the View Ranger App for free on your phone from your app store, or visit southdowns.gov.uk/viewranger on your computer or tablet. Then register and search for the South Downs National Park, to view the entire South Downs walk and ride routes, trail guidebook, and navigator.



Enquiries

Brighton & Hove City Council **01273 292480**
www.brighton-hove.gov.uk/breezebuses
Brighton & Hove Buses **01273 886200**
www.buses.co.uk
traveline **0871 200 22 33**
www.travelinesoutheast.org.uk

Comments and complaints

All feedback is welcome and will help us improve the service! Call 01273 292480
Email local.transport@brighton-hove.gov.uk
or write to Public Transport, Brighton & Hove City Council, Hove Town Hall, Hove, BN3 3BQ.

Large print?
01273 292480



National Trust



Brighton & Hove
essential travel for our city

SOUTH DOWNS
NATIONAL PARK



Brighton & Hove
City Council

6491 Brighton & Hove City Council
Communications Team
Illustrations: Jo Offer 07941 156308

breeze up to...

Devil's Dyke on the 77 bus

16 September 2018 to
27 April 2019

kids go
free!
Train travellers'
discount



Get fit...

Catch a 77 bus to Devil's Dyke and try one of these Linear Walks

Devil's Dyke to Poynings Cross Roads (roundabout on the A281): 2 miles via hill paths & Poynings, returning to Brighton on Stagecoach 17. (Service 17 is run by Sussex Coaches on Sundays & Bank Holidays).Discovery Tickets may be the cheapest option: see 'Fares' section of this leaflet. Other Brighton & Hove bus tickets are not valid on the 17 bus. For times call 0871 200 22 33 or go to www.travelinesoutheast.org.uk

Devil's Dyke to Upper Beeding: Follow the South Downs Way west for approx four miles to Beeding Hill then 3/4 mile north-west down the hill to the High Street in Upper Beeding. Then take the number 2 bus back to Brighton.

Devil's Dyke to Patcham: Take the Sussex Border Path east and then south-east for approx three miles to Patcham. Catch a 5A bus from Old London Road to Churchill Square in Brighton.

The routes cross open downland, which is unsurfaced and bumpy and fairly steep in places. They can become muddy and slippery when wet, so take care! An average walker will cover about 1 mile in half an hour. Use Ordnance Survey Maps 122 (Explorer) or 198 (Landranger).

Devil's Dyke
Marvel at Constable's grandest view in the world, and a dramatic example of a dry chalk valley.

Fulking

Shepherd & Dog (pub)

Devil's Dyke
(toilets and refreshments)

South Downs Way

The mascot of the 77 bus, the skylark, is heard more than it is seen on the Downs. Its song fills the air as it ascends high into the sky.

The 77 bus will stop at all bus stops on its route. Along Devil's Dyke Road, you can also hail the bus to stop anywhere that is safe for the driver to do so. This includes Dyke Approach, Brighton & Hove Golf Club and Hangleton Bridleway. All buses are low floor and wheelchair accessible double deckers, with space for buggies.

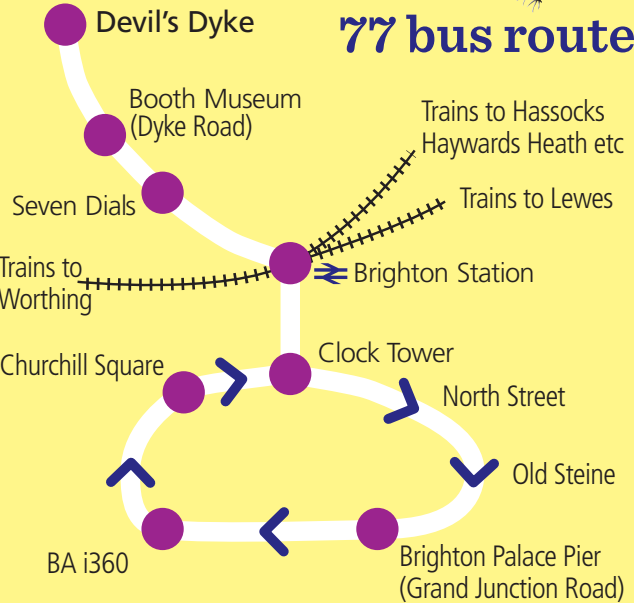
Relax! Let someone else do the driving, while you sit back, relax and enjoy the view.

Take in the views!

Why not sit on top and take in the superior views not normally visible from a car.

Car free and carefree... Take the bus to freedom! Freedom from traffic queues and parking hassles and the freedom to have a drink!

Timetable for the 77 bus



The 77 bus is operated by Brighton & Hove Buses. All buses are low floor and wheelchair accessible double deckers. The service is funded by Brighton & Hove City Council and the National Trust. Together with the South Downs National Park Authority they form the 'Breeze up to the Downs Partnership', whose mission is to improve access by bus to popular downland destinations. For more information call 01273 292480 or go to www.brighton-hove.gov.uk/breezebuses

Fares (prices may change)



Adults Brighton to Devil's Dyke £3 single, £5 Breeze Return (walkers can also use it to return from Ditchling Beacon or Stanmer Park!)

Children Up to two children (under 16) go free when travelling with an adult. BusID holders travel for £1 each way (except before 1800 on school days). Other children (5 - 13 only) pay half fare.

NetworkSAVER issued and accepted throughout the route. **CitySAVER** is not valid for travel to Devil's Dyke.

For full details of **SAVER** tickets please go to www.buses.co.uk/fares or phone 01273 886200

National Bus Pass holders travel free.

Discovery Tickets offer a day's unlimited bus travel in Sussex, Surrey, Kent and East Hampshire. Issued and accepted by most bus companies: buy on board the first bus you catch! Family (5 people, max 2 adults) £17.50, Adult £9, Child £7.20. www.southdowns.gov.uk/discoveryticket

Rail tickets Show rail ticket(s) valid to Brighton or Hove and get two 77 bus tickets for the price of one, or a third off an individual ticket (except SAVER and Discovery).

We apologise for any delays in the event of road works etc. Disruption will be kept to a minimum but details of any changes can be found at www.buses.co.uk or twitter.com/BrightonHoveBus or phone 01273 886200.

Saturdays, Sundays and Public Holidays only (Except 25 December)

16 September 2018 - 27 April 2019

Brighton Palace Pier (stop N)	0900	1015	1130	1245	1400	1515	1630	1745
British Airways i360	0902	1017	1132	1247	1402	1517	1632	1747
Churchill Square (stop H)	0907	1022	1137	1252	1407	1522	1637	1752
Brighton Station (stop E)	0912	1027	1142	1257	1412	1527	1642	1757
Seven Dials, Dyke Road	0915	1030	1145	1300	1415	1530	1645	1800
Dyke Road, Woodruff Avenue	0921	1036	1151	1306	1421	1536	1651	1806
Dyke Road Avenue, Tongdean Lane	0923	1038	1153	1308	1423	1538	1653	1808
Devil's Dyke Hotel	0931	1046	1201	1316	1431	1546	1701	1816
Devil's Dyke Hotel	0937	1052	1207	1322	1437	1552	1707	1822
Dyke Road Avenue, Tongdean Lane	0945	1100	1215	1330	1445	1600	1715	1830
Dyke Road, Woodruff Avenue	0947	1102	1217	1332	1447	1602	1717	1832
Seven Dials, Buckingham Place	0957	1112	1227	1342	1457	1612	1727	1842
Brighton Station (stop D)	0959	1114	1229	1344	1459	1614	1729	1844
Clock Tower, Boots (stop N)	1002	1117	1232	1347	1502	1617	1732	1847
Brighton Palace Pier (stop N)	1008	1123	1238	1353	1508	1623	1738	1853