



Useful contacts

Report an abandoned bike
www.brighton-hove.gov.uk/cycling

Request cycle parking
www.brighton-hove.gov.uk/cycling

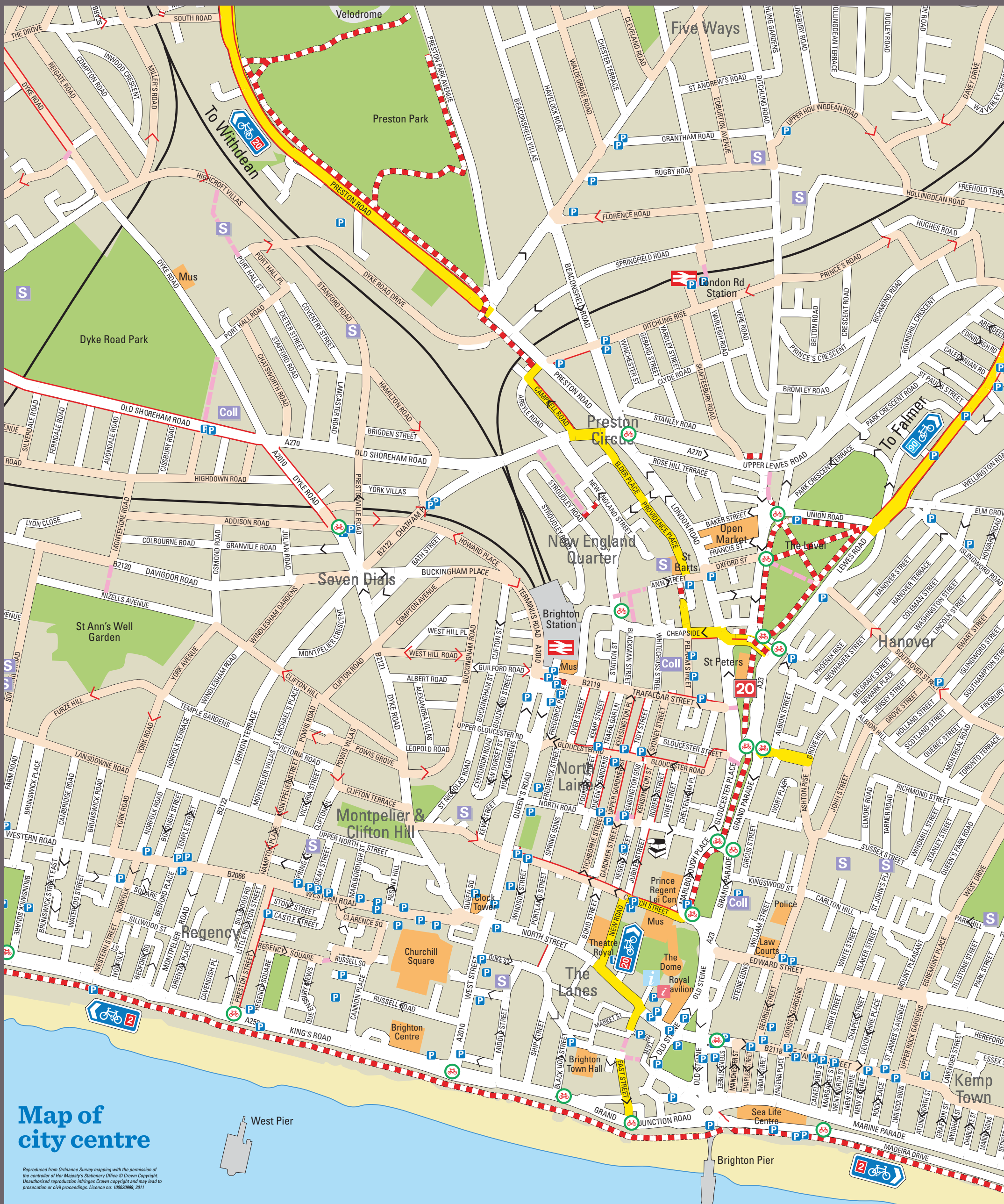
Active for life (activities for all ages)
www.activeforlife.org.uk

Bike It (encouraging cycling in schools)
www.brighton-hove.gov.uk/cycle-training

Sustrans
www.sustrans.org.uk

Report a road repair
www.brighton-hove.gov.uk/road-repairs

Transport Planning Team
travel_planning@brighton-hove.gov.uk



JourneyOn goes mobile!

Just type www.journeyon.co.uk on your Smartphone to:

- Plan a local journey
- Get real-time bus/train times
- Find your nearest

www.brighton-hove.gov.uk/cycling

Visit our webpage to tell us about your experience of cycling in the city, for updates on what is happening, or to report a problem with a cycle facility.

Cycle Information

Cycle signs

	Route recommended for cycles on main road
	Shared cycle and pedestrian route
	Segregated cycle and pedestrian route
	Contra-flow cycle route
	Cycle and bus route
	White cycle symbols help to identify a route
	Warning sign – cycle route ahead – warning for motorists
	Regulatory sign – no cycling

Cycle code of conduct

	Lights, both front and back, are a legal requirement on a bicycle. Use them at all times when visibility is reduced.
	Ring your bell to alert pedestrians, other cyclists, and other road users that you are approaching.
	Visitors to Brighton & Hove may not be aware of the seafront cycle route. Give way to pedestrians where possible. If you are in a hurry use the road.
	Cyclists need to follow the Highway Code.
	Jumping red lights is illegal. If you do so, you may be fined.
	Cycling on pavements is illegal. If you do so, you may be fined.

Cycle to work

Did you know there is a government tax incentive aimed at encouraging employees to cycle to work?

Under the scheme, you can get a long term loan for a bicycle and safety equipment completely tax free.

Find out more www.cyclescheme.co.uk

Cycles on trains

Fully folding cycles (with wheels under 20" in diameter) can be carried on to all trains without restriction, although a cycle cover may be required.

Full size cycles may be excluded from trains at peak times. Reservations may be necessary at other times.

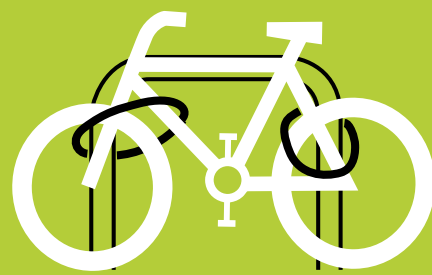
Please check before you board at http://www.nationalrail.co.uk/stations_destinations/cyclists.aspx



Bikeability

Brighton & Hove City Council runs Bikeability training courses for children in years five and six and aged 9 to 14 in the school holidays. Courses are free. Contact (01273) 293847 or www.brighton-hove.gov.uk/cycle-training

Keep your bike safe



Use cycle parking spaces where provided.

Lock both wheels and the frame to a bike stand or strong immovable object.

Lock 'tight' so your bike is hard to manoeuvre when parked.

Secure your lock so it does not touch the ground.

Cycle security

The police advise bike tagging which helps to deter theft and allows for your bike to be identified.

It is also important to report stolen cycles or cycle vandalism. Sussex Police have a reporting form on their website. Visit www.sussex.police.uk/help-centre/report-something-online/

Correct hand signals when cycling

The seafront cycle route has giveaway lines for pedestrians wishing to cross. Please cycle with courtesy and respect to all users.



Left turn



Right turn

Give way to pedestrians

The seafront cycle route has giveaway lines for pedestrians wishing to cross. Please cycle with courtesy and respect to all users.



On the road – position yourself where you can be seen

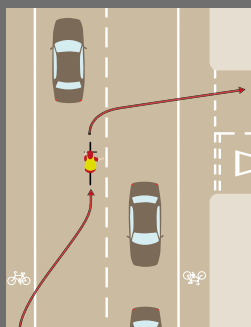
Junction safety



- **Advanced Stop Lines (ASLs)** Cyclists should use ASLs where provided. They are designed to improve visibility and safety at junctions.

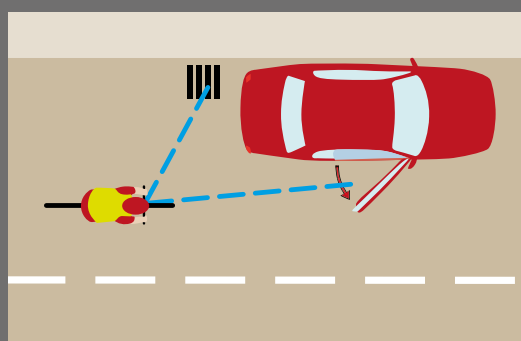


- Watch out for vehicles turning left



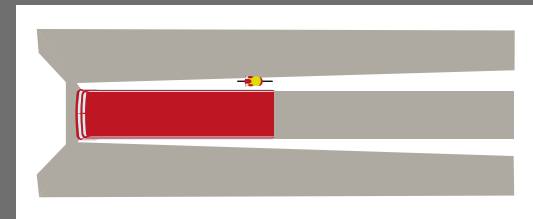
- When turning right, look, signal and wait for a safe gap to cross

Be aware of hazards



- Avoid cycling too close to the pavement or parked cars

Be aware that vehicles have blind spots



- Bus, van and lorry drivers cannot see all around their vehicles – The grey sections are the blind spots

Abandoned bike recycling

Abandoned bikes are being refurbished and sold in aid of charity. For more information visit www.brighton-hove.gov.uk/cycling



Sustrans Bike It

Pupils, parents and staff at Sustrans' Bike It schools learn the skills and confidence to enjoy safe cycling throughout their lives. Bike It Ben works in primary and secondary schools throughout the city to develop a lasting culture of cycling. For more information, please contact Ben on 07824813556 or ben.sherratt@sustrans.org.uk



Cycle businesses and organisations

Action Bikes (bike shop) 13 Landsdowne Mews, (Off) Farm Road, Hove, BN3 1FW
www.aarons-bicycle-shop.co.uk M: 07585 560531

Amsterdammers (Dutch bikes and cycle hire) Unit 8, Under the Station, Off Trafalgar Street, Brighton T: 01273 571555 E: bikes@amsterdammers.co.uk
www.amsterdammers.co.uk

For Amsterdammers cycle hire contact:
E: hello@brightoncyclehire.com www.brightoncyclehire.com

Bike for Life South (cycle training) 4 Montpelier Villas Brighton, BN1 3DH www.bikeforlifesouth.org.uk T: 01273 676278 M: 07792 211839 E: bikeforlife@gmx.com

Baker Street Bikes (bike shop & repairs) 7 – 8 York Place, Brighton, BN1 4GU T: 01273 675754
www.bakerstbikes.co.uk

Brighton BMX Co (BMX bike shop & repairs) 23B Baker St, Brighton, BN1 4JN T: 01273 686116
E: info@brightonbmxc.co.uk www.brightonbmxc.co.uk

Brighton Excelsior Cycling Club www.brightonexcelsior.co.uk
E: contact@brightonexcelsior.co.uk

Brighton Mitre Cycling Club www.brightonmitre.co.uk

Brighton Wheelchair Bike (wheelchair bike hire) www.wheelchairaccesstravel.com
E: [Brightonwheelchairbike@gmail.com](mailto: Brightonwheelchairbike@gmail.com)

Cranks (DIY bicycle workshop) 22 Chapel Street, Brighton, BN2 1RQ T: 01273 693477 www.cranks.org.uk

Cycle Store (bike shop & repairs) 93 London Rd, Brighton, BN1 4JF T: 01273 605160 www.myspokes.co.uk

Evans Cycles Brighton (bike shop) 4 Air Street, Brighton, BN1 3FB T: 01273 772357 www.evanscycles.com

Freedom Bikes (bike shop) 45 George St, Brighton, BN2 1RJ T: 01273 681698 www.freedombikes.co.uk
E: shop@freedombikes.co.uk

Get-a-Fix Cycles (mobile cycle mechanics) T: 01273 693249 M: 07928 116037 www.getafixcycles.org.uk

G-Whizz Cycles (second-hand bikes & repairs) 6A Brunswick Street East, Hove T: 01273 749049 www.g-whizzcycles.co.uk

Halfords (bike retailer & repairs) Unit 10, Sackville Trading Estate, Sackville Rd, Hove, BN3 7AN T: 01273 205656 Unit 1, The Pavilion Centre, Lewes Rd, Brighton, BN2 3QA T: 01273 604833 www.halfords.com

Hove Cycles (bike shop & repairs) 101 Blatchington Rd, Hove, BN3 3YG T: 01273 778360 www.hovecycles.com

M's Cycles (bike shop, repairs & training) High St, Shoreham-by-Sea, BN43 5DB T: 01273 567591 M: 07852 986165 / 07852 986163 www.msccycles.co.uk

Prestige Cycles (bike shop) 37A George St, Hove, BN3 3YB T: 01273 960194 www.prestige-cycles.co.uk
E: info@prestige-cycles.co.uk

Rayment Cycles (bike shop, repairs and cycle hire) 13-14 Circus Parade, New England Road, Brighton, BN1 4GW T: 01273 697617 www.raymentcycles.com
E: cycles.rayment@gmail.com

South Coast Bikes (door-to-door bike servicing & repairs) Quayside House, 2 Quayside Buildings, Basin Road South, Hove, BN41 1WF T: 01273 202124 www.southcoastbikes.co.uk E: enquiries@southcoastbikes.co.uk

Sydney Street Bikes (bike shop) 24 Sydney St, Brighton, East Sussex T: 01273 624700 www.sydneystreetbikes.co.uk
E: info@sydneystreetbikes.co.uk

Syd's Bikes 2 (bike shop & repairs) 73 Portland Rd, Hove, BN3 5DP T: 01273 747222 www.sydneystreetbikes.co.uk
E: info@sydsbikes2.co.uk

Velo Vitality (bike shop & repairs) 44 Trafalgar St, Brighton, BN1 4EDT: 01273 699184 E: info@velovitality.co.uk
www.velovitality.co.uk

Webbs Cycles (bike shop & repairs) 91 Boundary Rd, Hove, BN3 7GA T: 01273 417658 www.webbscycles.co.uk