

### Events at Devil's Dyke

For more information, or to join our dedicated volunteer team, phone 01273 857712 or e-mail [devilsdyke@nationaltrust.org.uk](mailto:devilsdyke@nationaltrust.org.uk)

#### 24 – 25 March and 31 March – 1 April

- **Lambing weekends** 10am until 4pm. Meet at Saddlescombe Farm (1 mile walk east via South Downs Way – approx. 20mins from Devil's Dyke bus stop). £15 for a family of 4 or £6 per adult and £3 per child, under 2s are free (cash only please).

#### 31 March – 2 April

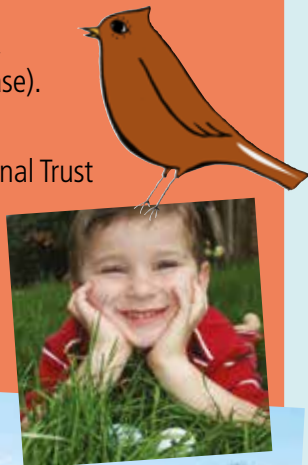
- **Egg hunts** Meet at the National Trust van to the north of the pub – between 11am and 3.30pm. £3 per participant.

#### 2 April

- **Easter Egg rolling** Meet at the head of the Dyke Valley at 10.45am. Event ends at 12noon. £1 per participant.

#### 22 April

- **Saddlescombe Farm Open day** 10.30am to 4pm: tours of ancient farm buildings and donkey wheel, plus heavy horses, farmers' market and children's games. £5 adult, £3 child, £13 family.



### Healthy days out are a Breeze

The Breeze bus routes are your ticket to fresh air and beautiful walks, in the glorious scenery of the stunning South Downs... they're your passport to a healthy day out (with a very low carbon footprint too!)

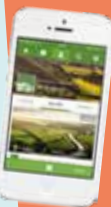


#### A scenic weekend walk from Ditchling Beacon to Devil's Dyke

Catch the weekend-only 79 bus to Ditchling Beacon. From the bus stop, walk west along the South Downs Way for about six miles to Devil's Dyke, via Saddlescombe. At the top of the Dyke, turn right along the road to the 77 bus stop (opposite the Devil's Dyke pub). For 79 bus times pick up the 'Breeze up to Ditchling Beacon' leaflet, call 01273 292480 or go to [www.buses.co.uk](http://www.buses.co.uk)

#### Exploring Devil's Dyke

A range of leaflets about the area, and ideas for walks or activities, is available from the National Trust information point at Devil's Dyke or contact 01273 857712. [www.nationaltrust.org.uk/devils-dyke](http://www.nationaltrust.org.uk/devils-dyke)



#### South Downs walks app

Download the View Ranger App for free on your phone from your app store, or visit [southdowns.gov.uk/viewranger](http://southdowns.gov.uk/viewranger) on your computer or tablet. Then register and search for the South Downs National Park, to view the entire South Downs walk and ride routes, trail guidebook, and navigator.



### Have you seen?

See the two other 'Breeze up to the Downs' leaflets about how to get to Stanmer Park and Ditchling Beacon.



See also our 'South Downs Bus Walks' leaflets. Call 01273 292480 for copies or go to [www.brighton-hove.gov.uk/breezebuses](http://www.brighton-hove.gov.uk/breezebuses)

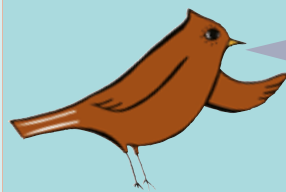
#### Visit Booth Museum of Natural History

free admission. On Dyke Road. Bus stop outside. Visit [www.brightonmuseums.org.uk/booth](http://www.brightonmuseums.org.uk/booth) or call 01273 292777 for opening times.

#### Find out about interesting sights along the route and facts about Devil's Dyke.

Download the Devil's Dyke Podcast at [www.visitbrighton.com/things-to-do/walking-guides/podcasts](http://www.visitbrighton.com/things-to-do/walking-guides/podcasts)

Things you'd never see from a car!



Taxi numbers (in case you miss the last bus!) are:

01273 747474,  
01273 204060,  
01273 414141,  
01273 205205.

### Enquiries

Brighton & Hove City Council 01273 292480  
[www.brighton-hove.gov.uk/breezebuses](http://www.brighton-hove.gov.uk/breezebuses)  
Brighton & Hove Buses 01273 886200  
[www.buses.co.uk](http://www.buses.co.uk)  
traveline 0871 200 22 33 [www.traveline.info/se](http://www.traveline.info/se)

### Comments and complaints

All feedback is welcome and will help us improve the service! Call 01273 292480  
Email [local.transport@brighton-hove.gov.uk](mailto:local.transport@brighton-hove.gov.uk)  
or write to Public Transport, Brighton & Hove City Council, Hove Town Hall, Hove, BN3 3BQ.

Large print?  
01273 292480



National Trust



Brighton & Hove  
essential travel for our city

SOUTH DOWNS  
NATIONAL PARK

Printed on 100% post consumer recycled FSC certified paper.

6216 Brighton & Hove City Council  
Communications Team  
Illustrations: Jo Offer 07941 156308



breeze up to...



## Devil's Dyke on the 77 bus

17 September 2017 to  
21 April 2018

kids go  
free!  
Train travellers'  
discount



## Get fit...

Catch a 77 bus to Devil's Dyke and try one of these Linear Walks

**Devil's Dyke to Poyning's Cross Roads (roundabout on the A281):** 2 miles via hill paths & Poyning's, returning to Brighton on Stagecoach 17 (Saturdays only). Discovery Tickets may be the cheapest option: see 'Fares' section of this leaflet. Other Brighton & Hove bus tickets are not valid on the 17 bus. For times call 0871 200 22 33 or go to [www.traveline.info/se](http://www.traveline.info/se)

### Devil's Dyke to Upper Beeding:

Follow the South Downs Way west for approx four miles to Beeding Hill then 3/4 mile north-west down the hill to the High Street in Upper Beeding. Then take the number 2 bus back to Brighton.

### Devil's Dyke to Patcham:

Take the Sussex Border Path east and then south-east for approx three miles to Patcham. Catch a 5A bus from Old London Road to Churchill Square in Brighton.

The routes cross open downland, which is unsurfaced and bumpy and fairly steep in places. They can become muddy and slippery when wet, so take care! An average walker will cover about 1 mile in half an hour. Use Ordnance Survey Maps 122 (Explorer) or 198 (Landranger).



The mascot of the 77 bus, the skylark, is heard more than it is seen on the Downs. Its song fills the air as it ascends high into the sky.

**The 77 bus will stop at all bus stops on its route.** Along Devil's Dyke Road, you can also hail the bus to stop anywhere that is safe for the driver to do so. This includes Dyke Approach, Brighton & Hove Golf Club and Hangleton Bridleway. All buses are low floor and wheelchair accessible double deckers, with space for buggies.

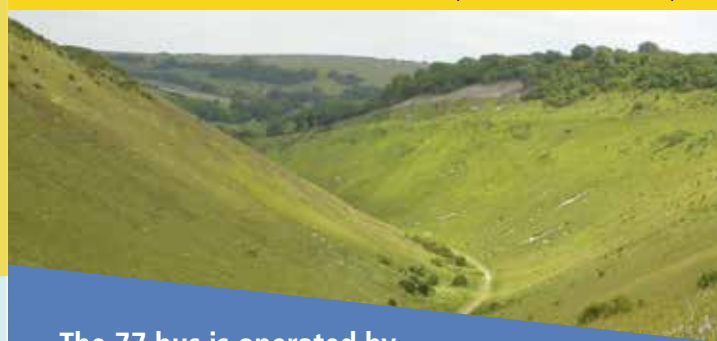
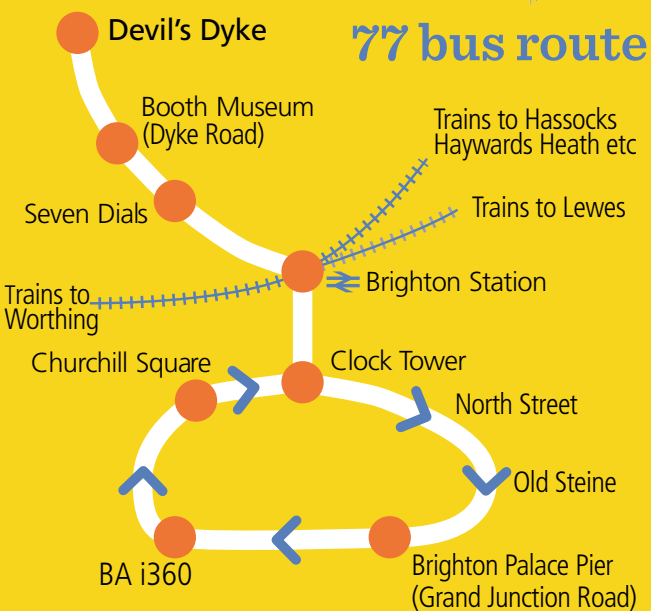
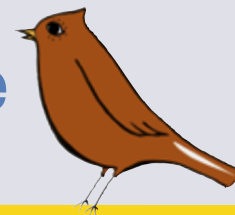
**Relax!** Let someone else do the driving, while you sit back, relax and enjoy the view.

### Take in the views!

Why not sit on top and take in the superior views not normally visible from a car.

**Car free and carefree...** Take the bus to freedom! Freedom from traffic queues and parking hassles and the freedom to have a drink!

## Timetable for the 77 bus



**The 77 bus is operated by Brighton & Hove Buses.** All buses are low floor and wheelchair accessible double deckers. The service is funded by Brighton & Hove City Council and the National Trust. Together with the South Downs National Park Authority they form the 'Breeze up to the Downs Partnership', whose mission is to improve access by bus to popular downland destinations. For more information call 01273 292480 or go to [www.brighton-hove.gov.uk/breezebuses](http://www.brighton-hove.gov.uk/breezebuses)

## Fares (prices may change)



**Adults** Brighton to Devil's Dyke £3 single, £4.50 Breeze Return (walkers can also use it to return from Ditchling Beacon or Stanmer Park!)

**Children** Up to two children (under 16) go free when travelling with an adult. BusID holders travel for 80p each way (except before 1800 on school days). Other children (5 – 13 only) pay half fare.

**NetworkSAVER** issued and accepted throughout the route. **CitySAVER** is not valid for travel to Devil's Dyke.

For full details of **SAVER** tickets please go to [www.buses.co.uk/fares](http://www.buses.co.uk/fares) or phone 01273 886200

**National Bus Pass holders** travel free.

**Discovery Tickets** offer a day's unlimited bus travel in Sussex, Surrey, Kent and East Hampshire. Issued and accepted by most bus companies: buy on board the first bus you catch! Family (5 people, max 2 adults) £16, Adult £8.50, Child £7. [www.discoveryticket.co.uk](http://www.discoveryticket.co.uk)

**Rail tickets** Show rail ticket(s) valid to Brighton or Hove and get two 77 bus tickets for the price of one, or a third off an individual ticket (except SAVER and Discovery).

## Saturdays, Sundays and Public Holidays only

17 September 2017 - 21 April 2018

We apologise for any delays in the event of road works etc. Disruption will be kept to a minimum but details of any changes can be found at [www.buses.co.uk](http://www.buses.co.uk) or [twitter.com/BrightonHoveBus](https://twitter.com/BrightonHoveBus) or phone 01273 886200.

<b>Brighton Palace Pier (stop N)</b>	<b>0900</b>	<b>1015</b>	<b>1130</b>	<b>1245</b>	<b>1400</b>	<b>1515</b>	<b>1630</b>	<b>1745</b>
British Airways i360	0902	1017	1132	1247	1402	1517	1632	1747
Churchill Square (stop H)	0907	1022	1137	1252	1407	1522	1637	1752
Brighton Station (stop E) ➡	0912	1027	1142	1257	1412	1527	1642	1757
Seven Dials, Dyke Road	0915	1030	1145	1300	1415	1530	1645	1800
Dyke Road, Woodruff Avenue	0921	1036	1151	1306	1421	1536	1651	1806
Dyke Road Avenue, Tongdean Lane	0923	1038	1153	1308	1423	1538	1653	1808
<b>Devil's Dyke Hotel</b>	<b>0931</b>	<b>1046</b>	<b>1201</b>	<b>1316</b>	<b>1431</b>	<b>1546</b>	<b>1701</b>	<b>1816</b>

<b>Devil's Dyke Hotel</b>	<b>0937</b>	<b>1052</b>	<b>1207</b>	<b>1322</b>	<b>1437</b>	<b>1552</b>	<b>1707</b>	<b>1822</b>
Dyke Road Avenue, Tongdean Lane	0945	1100	1215	1330	1445	1600	1715	1830
Dyke Road, Woodruff Avenue	0947	1102	1217	1332	1447	1602	1717	1832
Seven Dials, Buckingham Place	0957	1112	1227	1342	1457	1612	1727	1842
Brighton Station (stop D) ➡	0959	1114	1229	1344	1459	1614	1729	1844
Clock Tower, Boots (stop N)	1002	1117	1232	1347	1502	1617	1732	1847
<b>Brighton Palace Pier (stop N)</b>	<b>1008</b>	<b>1123</b>	<b>1238</b>	<b>1353</b>	<b>1508</b>	<b>1623</b>	<b>1738</b>	<b>1853</b>